

case coding

by inc.jet



.core

2" print solutions

Designed for Case Coding

proven and dependable performance

Reduced Costs

Lowering the Total Cost of Ownership

With a bulk ink handling system included as an essential part of an integrated head, .core units are the most cost effective way of printing on cases and cartons. And with an ink designed specifically for printing on Kraft Corrugate and other carton materials available, total running costs are minimized at all times.

- Lowest total operating cost of any inkjet case coder
- Instant cost per mark and ink usage reporting
- 800mL Bulk systems.
- Print in black or in spot colors

The .core integrated heads are the essence of what makes inc.jet's industrial printing solutions so successful—rugged design, solid connections to external elements and the finest print heads in the industry, all provided in a commercial off-the-shelf system.

- No mess, no maintenance HP and inc.jet Technology
- Rugged industrial design for the most demanding installations
- Variable and fixed data capability
- SQL Database connectivity
- Simple ASCII interface to supply dynamic data from scanners and PLC's
- Online/Offline job creation

Lifetime Warranty

for your peace of mind



inc.jet provides a Lifetime Warranty for its IPS hardware products and warrants that each product is to be in good working order for the product's lifecycle whether purchased from inc.jet or an authorized inc.jet business partner.

Should the product fail to be in good working order, inc.jet will repair or replace this product at no charge,



complete system mounts to a single stand

All Inclusive Solutions

for your peace of mind

inc.jet's Integrated heads are enclosed in an industrialized stainless steel casing for maximum protection. Seamlessly included in this rugged housing is a print controller and a bulk ink system.

The integrated head has connections for encoders, stack lights, and an internal or external sensor as well as an Ethernet port for connecting to an inc.jet User Interface or even external data sources.

- 2" Print Head
- Accessory Kit (Sensor, encoder and Stack Light)
- 15 User Interface (with Design and Management software)
- Industrial Stand
- Bulk Ink System

Add a further 2" print capability with:

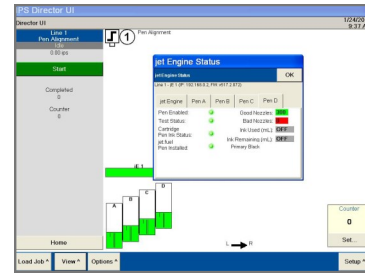
- Additional 2" Print Head
- Additional Bulk Ink System



.core Integrated Head (front view)



15" screen with keyboard



Highly flexible Software



Bulk Ink Delivery

Print Resolution		
600 dpi x 300 dpi		250 feet per minute
300 dpi x 300 dpi		500 feet per minute
Print Density		User configurable
Printable Items		
Barcode Capability	Static:	87 Types
	Dynamic	9 Types
Other Printable Items		Lot Codes
		Date/Expiry Date
		Shift Codes
		Foreign Languages
		Bitmaps/Logos
		Fixed Text
		User Inserts
		Counters and Batch Numbers

January 2014, Rev B