

PARTS LIST

<u>KEY</u>	<u>QTY.</u>	<u>AM-12</u>	<u>AM-58</u>	<u>AM-34</u>	<u>DESCRIPTION</u>
1	3	004618	004618	004618	Socket head cap screw, #10-24 x 5/8
2	1	023232	023232	023232	Handle
3	1	023211	023211	023211	Cam roller
4	1	023210	023210	023210	Cam roller pin
5	1	004958	004958	004958	Roll pin, 1/8 x 7/8
6	1	023217	023217	023217	Shoulder scr., 3/8 D x 3/8 L 5/16-18 x 1/2
7	1	267631	267631	267631	Sealer frame
8	1	009016	009016	009016	Socket head cap screw, 5/16-18 x 1
9	1	023352	023352	023352	Set screw, 1/4-20 x 1/2
10	1	005197	005197	005197	Roll pin, 5/32 x 11/16
11	1	005185	005185	005185	Tensioner pawl
12	1	005186	005186	005186	Pawl spring
13	1	023219	023219	023219	Tensioner pinion
14	1	023234	023234	023234	Tensioner handle
15	2	010054	010054	010054	Knob
16	2	010057	010057	010057	Roll pin, 1/4 x 1 3/4
17	1	007707	007707	007707	Detent washer
18	1	005279	005279	005279	Detent bushing
19	1	005165	005165	005165	Detent spring
20	1	005164	005164	005164	Detent plunger
21	1	023222	023222	023222	Handle bushing
22	1	023216	023216	023216	Support shaft
23	1	005192	005192	005192	Retaining pawl pin
24	2	003911	003911	003911	Lock nut, 5/16-24
25	2	005208	005208	005208	Feedwheel washer
26	1	023214	023214	023214	Tensioner gear
27	1	001611	001611	001611	Cotter pin, 3/32 x 3/4
28	1	005141	005141	005141	Short retaining pawl
29	1	005139	005139	005139	Long retaining pawl
30	2	005191	005191	005191	Retaining pawl spring
31	1	023242	023242	023242	Gear housing
32	1	023213	023213	023213	Feedwheel shaft
33	3	005211	005211	005211	Lock nut, 5/16-18
34	1	008852	008852	008852	Knob
35	1	023248	023248	023248	Handle weldment
36	1	020643	020643	020643	Strap guide spring
37*	2	009041	009041	009041	Socket head cap screw, 1/4-20 x 3/4
38	2	008153	008153	008153	Flat head socket cap screw, 5/16-18 x 3/4
39	1	422777	422777	422777	Tensioner frame (See Note "D" on page 14.)
40	1	023218	023218	023218	Gear housing spring
41	1	023244	023244	023244	Detent stop
42	1	006566	006566	006566	Spring washer
43	1	006564	006564	006564	Feedwheel
44	1	023225	023224	023212	Side plate
45	2	003868	003868	003868	Lock nut, 3/8-24, thin
46	1	006567	006567	006567	Side plate bushing
47	1	005209	005209	005209	L. H. nut, 5/16-24
48	1	023762	023763	023764	Rocking gripper
48A	1	023295	023296	023297	Gripper, alternate
49	3	005054	005054	005054	Truarc, #5100-31
50	1	023215	023215	023215	Ejector lever
51	1	023348	023348	023348	Ejector spring
52	1	020619	020619	020619	Ejector

* Use Loctite #242, Signode Part No. 422795.

PARTS LIST Continued

<u>KEY</u>	<u>QTY.</u>	<u>AM-12</u>	<u>AM-58</u>	<u>AM-34</u>	<u>DESCRIPTION</u>
53	1	026866	026866	026866	Truarc
54	1	020621	020621	020621	Ejector pin
55	1	020664	020664	020664	Ejector lever spring
56	1	023756	023756	023756	Gripper trigger
57	1	023766	023766	023766	Truarc, #5133-25
58	1	023765	023765	023765	Trigger pivot
59	1	020635	020635	020635	Gripper spring
60	1	023758	023758	023758	Gripper lever
61	1	423342	423342	423342	Seal pad assembly
62	1	020640	020640	020640	Magazine spring
63*	2	004939	004939	004939	Drive screw, #2 x 3/16
64	1	020622	020622	020622	Ejector pin
65	1	020862	020689	020689	Magazine
66	1	007150	007150	007150	Dowel pin, 3/16 x 7/8
67	1	020853	020620	020620	Cutter block
68	1	020662	020662	020662	Strap guide pin
69	1	020601	020601	020601	Strap latch, fixed
70	1	020858	020604	020603	Strap latch, moveable
71	2	003914	003914	003914	Socket head cap screw
72	1	020628	020628	020628	Holding gripper
73	1	286374	286374	286374	Safety sign
74	1	023241	023241	023241	Roller pin
75	1	020618	020618	020618	Cutter blade
76	4	023226	055926	023201	Outer jaw
77	2	306537	020607	020606	Notcher
78	2	023227	055928	023202	Jaw
	2	-	-	306814	Jaw (AM-3431 Option)
79	2	023203	023203	023203	Flat toggle link
80	2	020605	020605	020605	Notcher pin
81	2	020627	020627	020627	Toggle pin
82	1	023204	023204	023204	Forked toggle link
83	2	020615	020615	020615	Jaw pin
84	2	004500	004500	004500	Steel ball, 1/4 dia.
85	1	005158	005158	005158	Rack lock spring
86	1	023206	023206	023206	Rack pin
87	1	023205	023205	023205	Rack
88	1	004727	004727	004727	Washer
89	1	023208	023208	023208	Cam
90	1	023209	023209	023209	Sealer pinion bearing
91	1	010019	010019	010019	Roll pin, 1/4 x 1
92	1	023207	023207	023207	Sealer pinion
93	1	023229	023228	023228	Jaw support
94	1	023221	023221	023221	Short pinion bearing
95	1	423331	423331	423331	Sealer handle
	1	-	-	015767	Sealer handle (AM-3431 Option)
96	1	433398	433398	433398	Safety sign
97	1	003132	003132	003132	Safety sign
98	1	253951	253952	253953	Nameplate
	1	-	-	286361	Nameplate (AM-3431 Option)
99	1	023245	023245	023245	Tensioner handle assembly
100	1	423331	423331	423331	Sealing handle assembly
101	1	263383	263384	266908	Rear guide pad
102	2	261854	261853	-	Wear plug
103	1	-	-	266907	Wear plug

* Use Loctite #242, Signode Part No. 422795.

⚠ WARNING

Inspect all parts daily and replace them if they are worn or broken. Failure to do this can affect a product's operation and could result in serious personal injury.

- When ordering parts, please show model, part number and description.
- Standard hardware parts may obtained at any local hardware supply.
- Recommended spare parts are underlined and should be stocked.

Apply a thin coating of Lubriplate 3000W grease (Signode Part No. 422793) to all moving parts of this assembly.

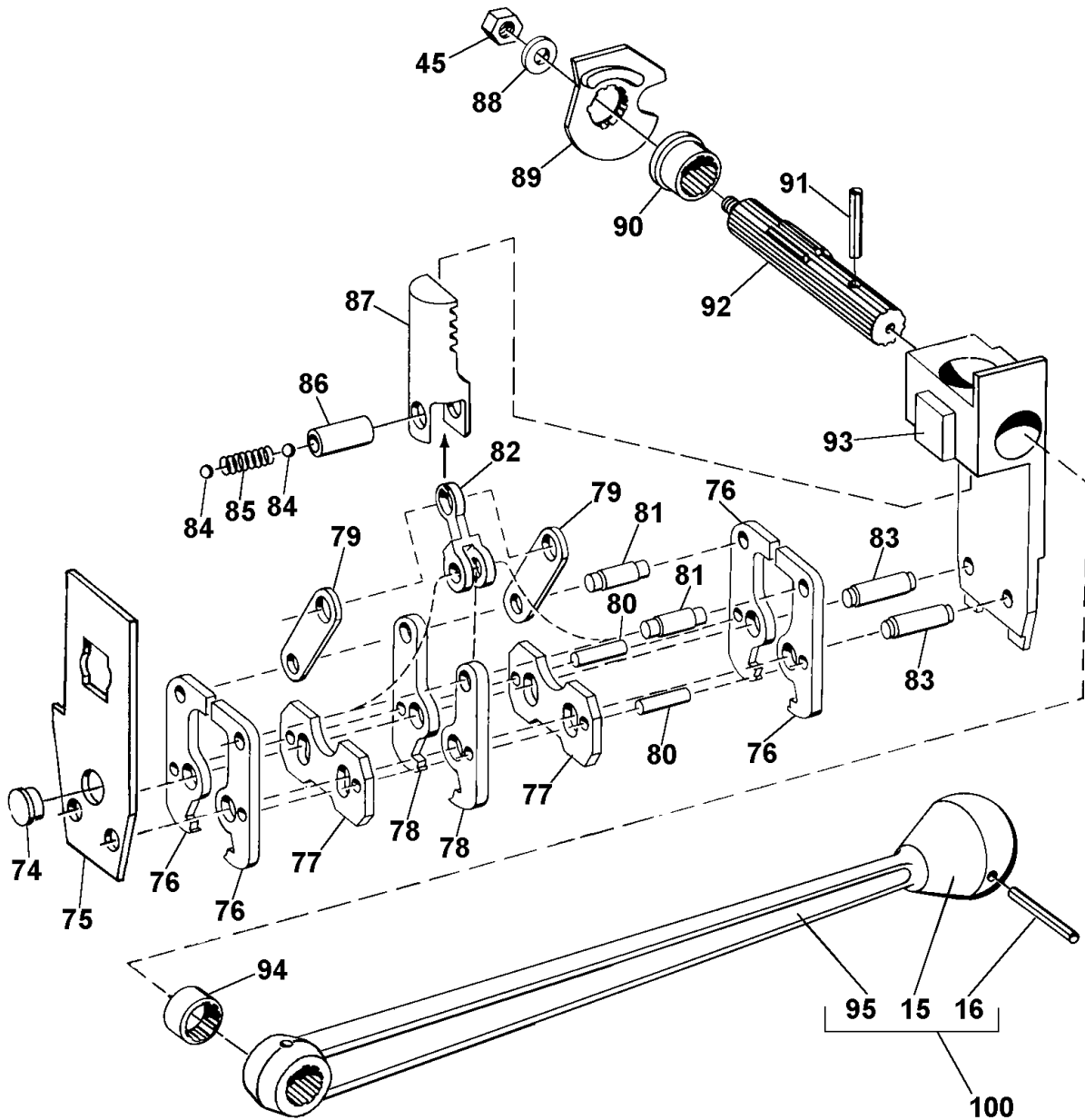


FIGURE 8. SEALING MECHANISM

⚠ WARNING

Inspect all parts daily and replace them if they are worn or broken. Failure to do this can affect a product's operation and could result in serious personal injury.

Apply a thin coating of Lubriplate 3000W grease (Signode Part No. 422793) to all moving parts of this assembly except for the Feedwheel, Key 43.

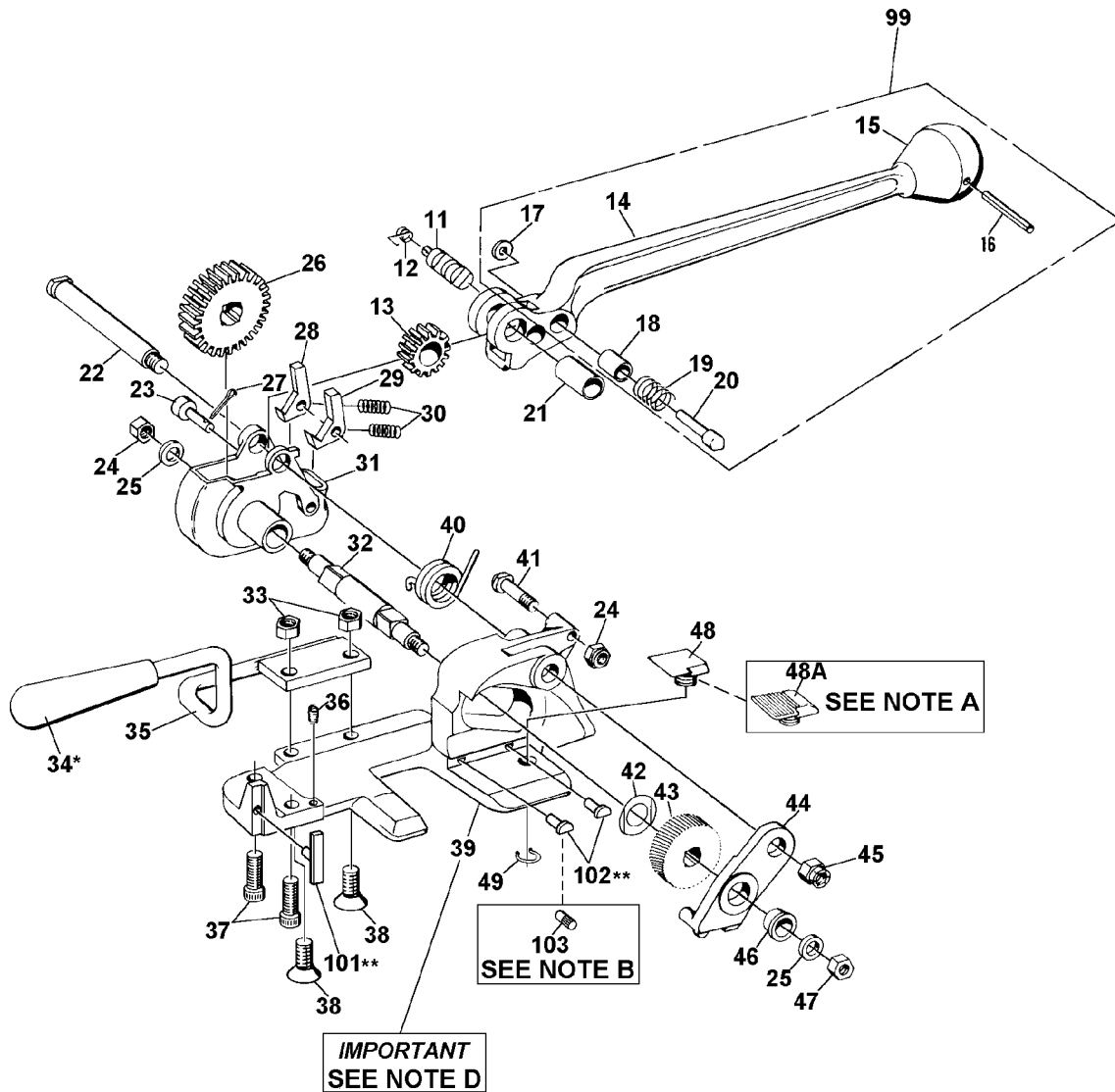
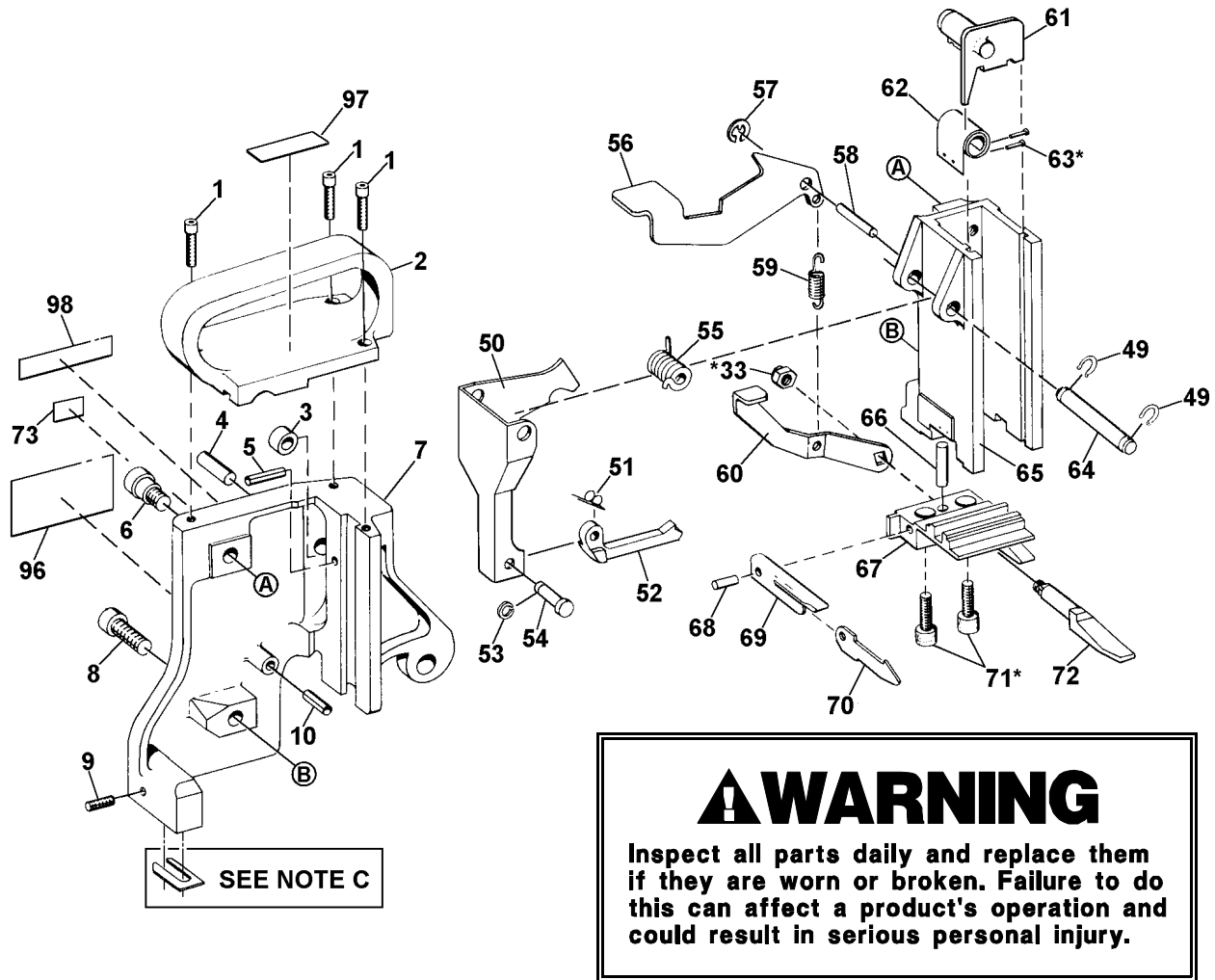


FIGURE 9. TENSIONING MECHANISM

* Apply one drop of Loctite #242 (Blue) Threadlocker (Signode P/N 422795) to cleaned parts. Allow 12 hours to set if possible. Do not apply to small screws or close to moving parts as liquid spreads easily.

** Apply one drop of Loctite #271 (Red) Threadlocker (Signode P/N 422796) to cleaned parts. Allow 12 hours to set if possible. Do not apply to small screws or close to moving parts as liquid spreads easily.

Apply a thin coating of Lubriplate 3000W grease (Signode Part No. 422793) to all moving parts of this assembly.



WARNING

Inspect all parts daily and replace them if they are worn or broken. Failure to do this can affect a product's operation and could result in serious personal injury.

FIGURE 10. MAGAZINE ASSEMBLY

NOTES:

- A. For applications requiring a longer length of bottom strap, an alternate gripper (48A) is available by special order. When using alternate gripper, tool is threaded with both straps on top of the gripper.
- B. Key 103 replaces Keys 102 on AM-34 tools. Only one Key 103 is used and is installed into the rear mounting hole.
- C. Add shims as required to allow for strap to be easily inserted under the holding gripper. Remove shims as required if strapping pulls out from holding gripper during tensioning.

Shims are available in the following sizes: .015" (0.38mm), Signode P/N 024772
 .020" (0.50mm), Signode P/N 024773
 .025" (0.63mm), Signode P/N 024774

- D. If replacing the Tensioner Frame (Key 39, Part No. 422777), please remember to order the Rear Guide Pad (Key 101) and Wear Plug (Key 103) for the appropriate strap size.