

## PARTS LIST, PRESSURE CYLINDER

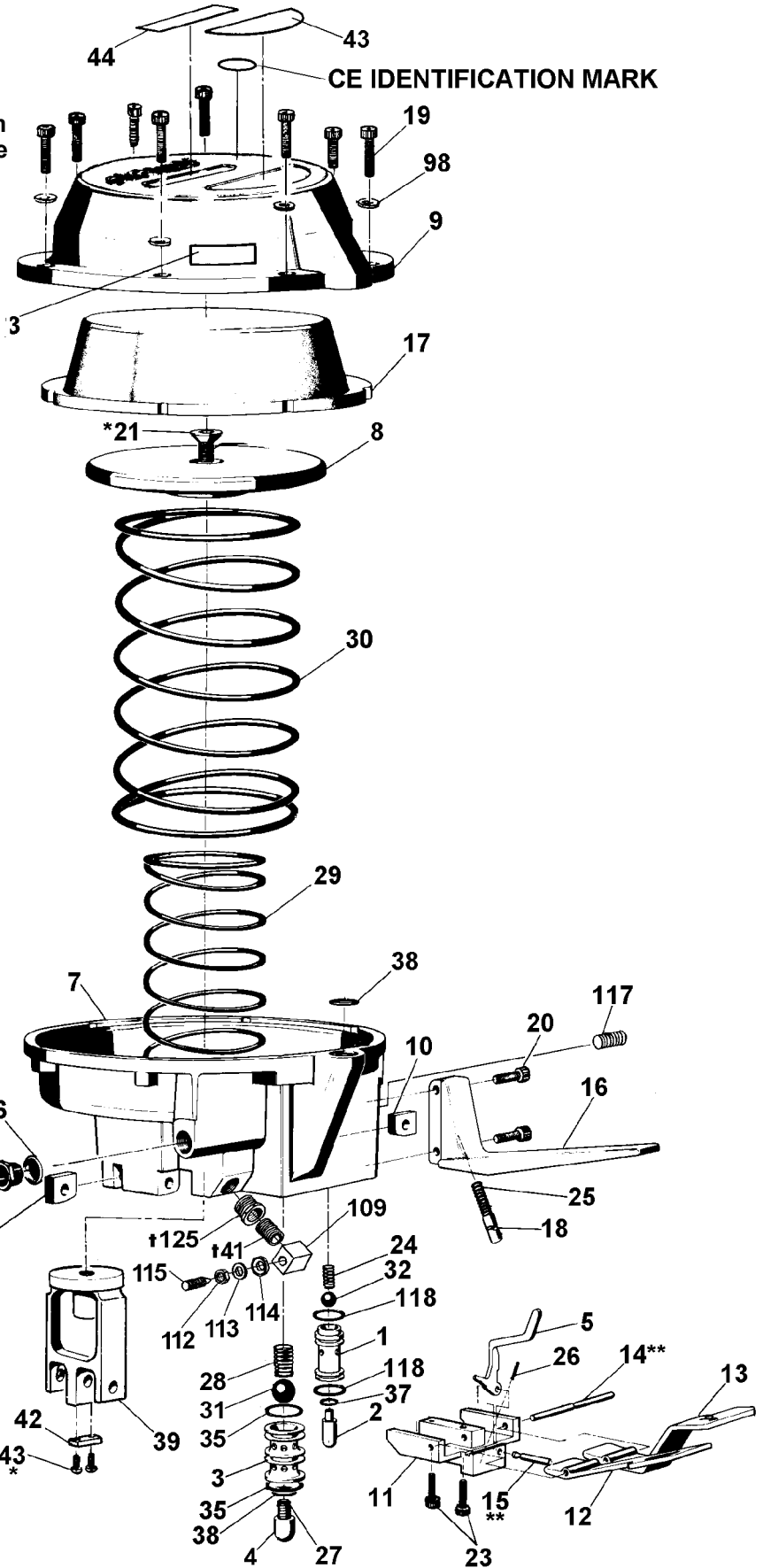
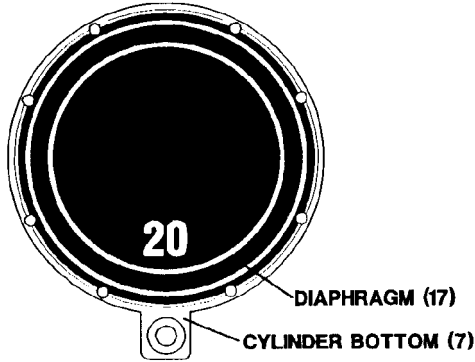
<u>KEY</u>	<u>QTY.</u>	<u>PART NO.</u>	<u>DESCRIPTION</u>	
1	1	306650	Valve sleeve (tension)	
2	1	306651	Valve stem (tension)	
3	1	306652	Valve sleeve (seal)	
4	1	306653	Valve stem (seal)	
5	1	306657	Catch link	
6	1	306658	Screen	
7	1	306671	Cylinder bottom	
8	1	306672	Piston	
9	1	306673	Cylinder cover	
10	2	306677	Jaw guide	
11	1	306679	Lever support	
12	1	306680	Valve lever (sealer)	
13	1	306681	Valve lever (tension)	
14	1	306682	Lever pin	
15	1	306683	Catch pin	
16	1	306684	Handle	
17	<u>1</u>	<u>306685</u>	<u>Diaphragm</u>	
18	1	306701	Spring socket	
19	10	165392	SHCS, M5 x 30	
20	2	010037	SHCS, M6 x 20	
21	1	306729	FHSCS, M8 x 30	
23	2	256970	SHCS, M4 x 25	
24	1	306776	Compression spring, Lee #LC-026D-3	
25	1	306777	Compression spring, Lee #LC-045D-19	
26	1	306778	Compression spring, Lee #LC-016A-4	
27	1	306779	Compression spring, Lee #LC-022D-6	
28	1	306741	Compression spring, Lee #LC-042G-5	
29	1	306721	Compression spring, inner	
30	1	306722	Compression spring, outer	
31	1	306733	Rubber ball, 5/8" Dia.	
32	1	306734	Rubber ball, 3/8" Dia.	
33	1	008478	Reducing bushing, 3/8 x 1/4"	
34	1	020704	Hansen plug, 1/4-18	
35	2	022789	O ring, #2-016	
36	1	008798	Tag	
37	1	004164	O ring, #2-011	† Install using Teflon pipe tape.
38	2	097529	O ring, #2-111	* Secure with Loctite #242.
39	1	306665	Piston rod	** Lubricate with Molith #2 or
41	1	016148	Pipe nipple	
42	1	306660	Wear plate	Lubriplate #3000W grease.
43	2	150589	BHCS, M3 x 8	
44	1	306707	Nameplate	
45	1	286385	Warning sign	
98	14	187415	Split lockwasher, 5mm	
109	1	422693	Adjustment block	
112	1	059918	Hex nut, 5/16-18	
113	1	171655	Nylon lockwasher	
114	1	171661	Steel collar	
115	1	024714	Screw	
117	1	015219	Pipe plug, 1/8"	
118	2	092772	O ring, #2-014	
120	1	004190	Street elbow, 3/8	
123	1	286373	3-Icon information sign	
125	1	250907	Reducing Bushing, 1/8 x 1/4	

- When ordering parts, please show tool model, part number and description.
- Wearing parts are usually limited to those underlined and should be stocked.
- Standard hardware may be obtained at any local hardware supply.

**NOTES:**

Lubricate valve parts with Lubriplate grease.

To align holes properly, assemble Diaphragm (Key 17) with the numeral "20" pointing to the rear of the tool as shown.



**! WARNING**

Compression springs Keys 25, 26, 29, 30) are compressed under tension.

Use care when removing the piston (Key 8) to avoid personal injury.

Inspect all parts daily and replace them if they are worn or broken. Failure to do this can affect a product's operation and could result in serious personal injury.

## PARTS LIST, JAW STACK

<u>KEY</u>	<u>QTY.</u>	<u>PART NO.</u>	<u>DESCRIPTION</u>
40	2	010036	FHSCS, M6 x 16
46	2	306654	Guide
47	4	306659	<u>Jaw</u>
48	4	306661	<u>Notcher</u>
49	2	306662	<u>Jaw pin</u>
50	4	306663	<u>Jaw link</u>
51	4	306664	<u>Link pin</u>
52	1	306666	<u>Rod pin</u>
53	1	306667	<u>Side plate, rear</u>
54	2	306668	Spreader
55	2	306764	Spacer sleeve
56	1	306670	<u>Side plate, front</u>
57	1	306674	<u>Cutter</u>
58	1	306675	Cutter lever
59	1	306676	Support plate
60	1	306678	Hanger mount
61	6	010028	<u>SHCS, M5 x 12</u>
62	2	424042	Bushing
63	1	306698	Hanger
64	1	306702	Clutch
65	1	306703	Detent
66	2	186983	SHCS, M8 x 60
67	1	306738	<u>Flat head socket cap screw, M5 x 50, partial thread</u>
68	1	306755	Lock nut, M5, poly insert
69	2	162381	Split lock washer, 8mm
71	1	306732	Compression spring, Lee #LC-067GH-1
72	2	424041	Serrated lock washer, 6mm
77	1	086190	Truarc, Klipring #5304-37
78	1	423286	Guard assembly
80	1	306706	Hanger sleeve
81	1	007334	Woodruff key
97	2	169440	Hex nut, M5
98	13	187415	Split lockwasher, 5mm
122	4	171689	<u>SHCS, M5 x 18</u>
124	1	306737	Dowel pin, 6 x 34mm

- When ordering parts, please show tool model, part number and description.
- Wearing parts are usually limited to those underlined and should be stocked.
- Standard hardware may be obtained at any local hardware supply.

# **⚠ WARNING**

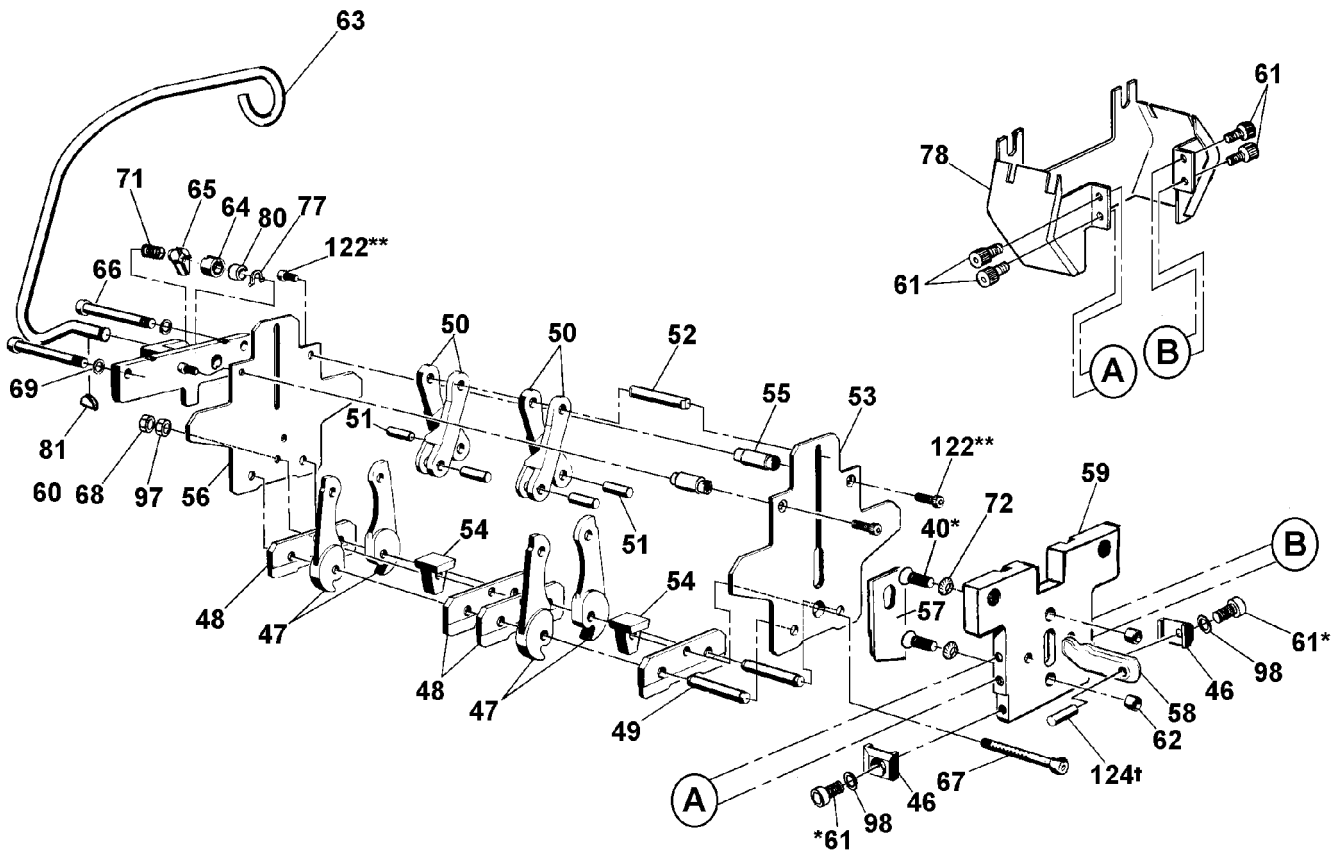
Inspect all parts daily and replace them if they are worn or broken. Failure to do this can affect a product's operation and could result in serious personal injury.

\* Secure with Loctite #242.

\*\* Secure with Loctite #272.

† Press fit.

NOTE: Lubricate all moving parts with Molith #2 or Lubriplate #3000W grease.



## PARTS LIST, TENSIONER FOOT

<u>KEY</u>	<u>QTY.</u>	<u>PART NO.</u>	<u>DESCRIPTION</u>
19	2	165392	SHCS, M5 x 30
70	2	162404	Dowel pin, 6 x 28mm
73	1	422696	<u>Fitting</u>
83	1	306687	<u>Tensioner foot</u>
88	1	423566	<u>Feedwheel</u>
89	1	306694	Pivot shaft
90	1	306695	Outer link
92	1	424271	<u>Air line tubing</u>
93	1	424160	Air motor
94	1	180145	HHCS, M5 x 16
96	1	306728	<u>SHCS, M5 x 6</u>
97	2	169440	Hex nut, M5
98	14	187415	Split lock washer, M5
101	2	306772	Needle bearing, INA-BK1212
106	1	306767	<u>DU flange bearing, FMB# 1217-DU</u>
111	1	306655	<u>Wear plug</u>
116	1	306699	Guide pin

- When ordering parts, please show tool model, part number and description.
- Wearing parts are usually limited to those underlined and should be stocked.
- Standard hardware may be obtained at any local hardware supply.

### **WARNING**

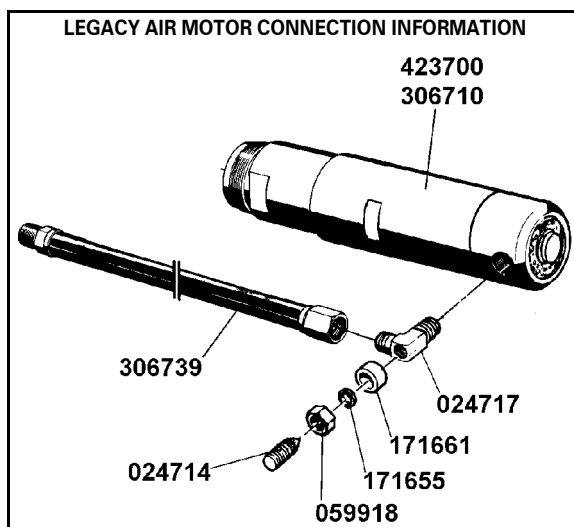
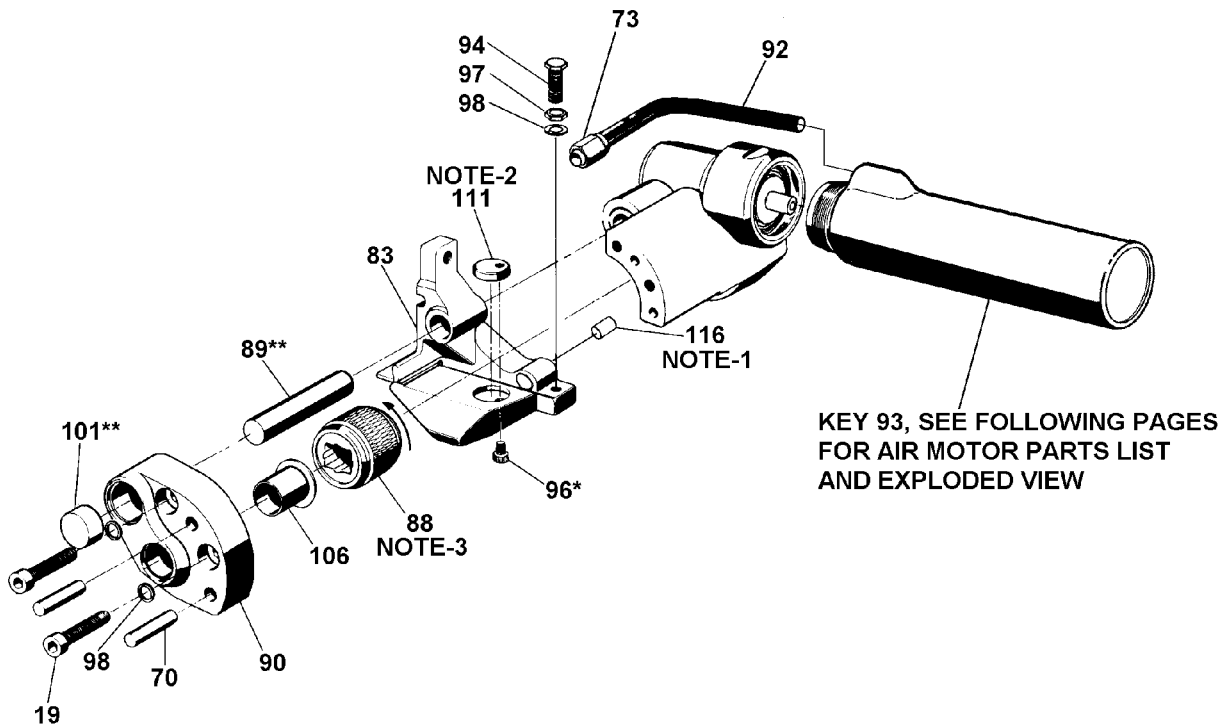
**Inspect all parts dally and replace them if they are worn or broken. Failure to do this can affect a product's operation and could result in serious personal injury.**

\* Secure with Loctite #242.

\*\* Lubricate with Molith #2 or Lubriplate 3000W grease.

**NOTES:**

1. Press pin in flush with the back surface of the tensioner foot.
2. Install with polished side facing up.
3. Install feedwheel with counterbore facing towards outer link with arrow in direction shown.



**NOTE:** If replacing an older PRHM motor (423700 or 306710) with the newer style motor (424160) the Air Motor Conversion Kit, Part No. 424195 must be used. See page 37 for additional details.

## PARTS LIST, GEAR HOUSING

<u>KEY</u>	<u>QTY.</u>	<u>PART NO.</u>	<u>DESCRIPTION</u>
82	1	306656	Bearing sleeve
84	1	306689	Gear housing
85	1	306690	Feedwheel shaft
<u>86</u>	<u>1</u>	<u>306691</u>	<u>Worm wheel</u>
87	1	306692	Bearing cover
91	1	306696	Worm
95	2	256747	SHCS, M4 x 16
99	1	000884	Woodruff key, 5 x 7.5 x 18.57
100	1	306771	Ball bearing, INA# 7201BE
101	2	306772	Needle bearing, INA# BK1212
102	1	306770	Needle bearing, INA# BK1712
103	1	306769	Needle bearing, INA# HK1712
104	1	306768	Inner ring, INA# IR12X16X16
105	1	306782	Seal, INA# GR17X23X3
107	1	306766	Thrust needle cage, INA# AXK1730
108	2	306704	Thrust washer, INA# AS1730
110	1	256755	O ring, #2-030

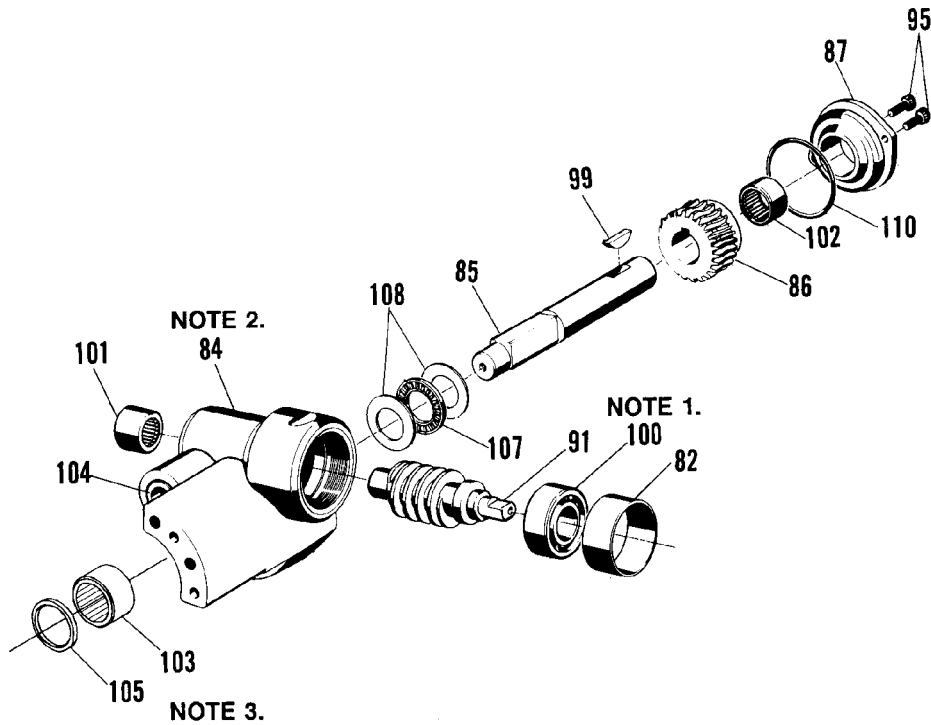
- When ordering parts, please show tool model, part number and description.
- Wearing parts are usually limited to those underlined and should be stocked.
- Standard hardware may be obtained at any local hardware supply.

# **! WARNING**

Inspect all parts daily and replace them if they are worn or broken. Failure to do this can affect a product's operation and could result in serious personal injury.

## NOTES

1. Bearing must be installed with the wide shoulder away from the worm gear.
2. Fill the gear housing 1/3 full with Non Fluid Oil #55 (Non Fluid Oil Company or equivalent).
3. Install Key Numbers 103 & 105 in gear housing (Key 84) using Loctite Bearing Mount #609.





## PARTS LIST, AIR MOTOR

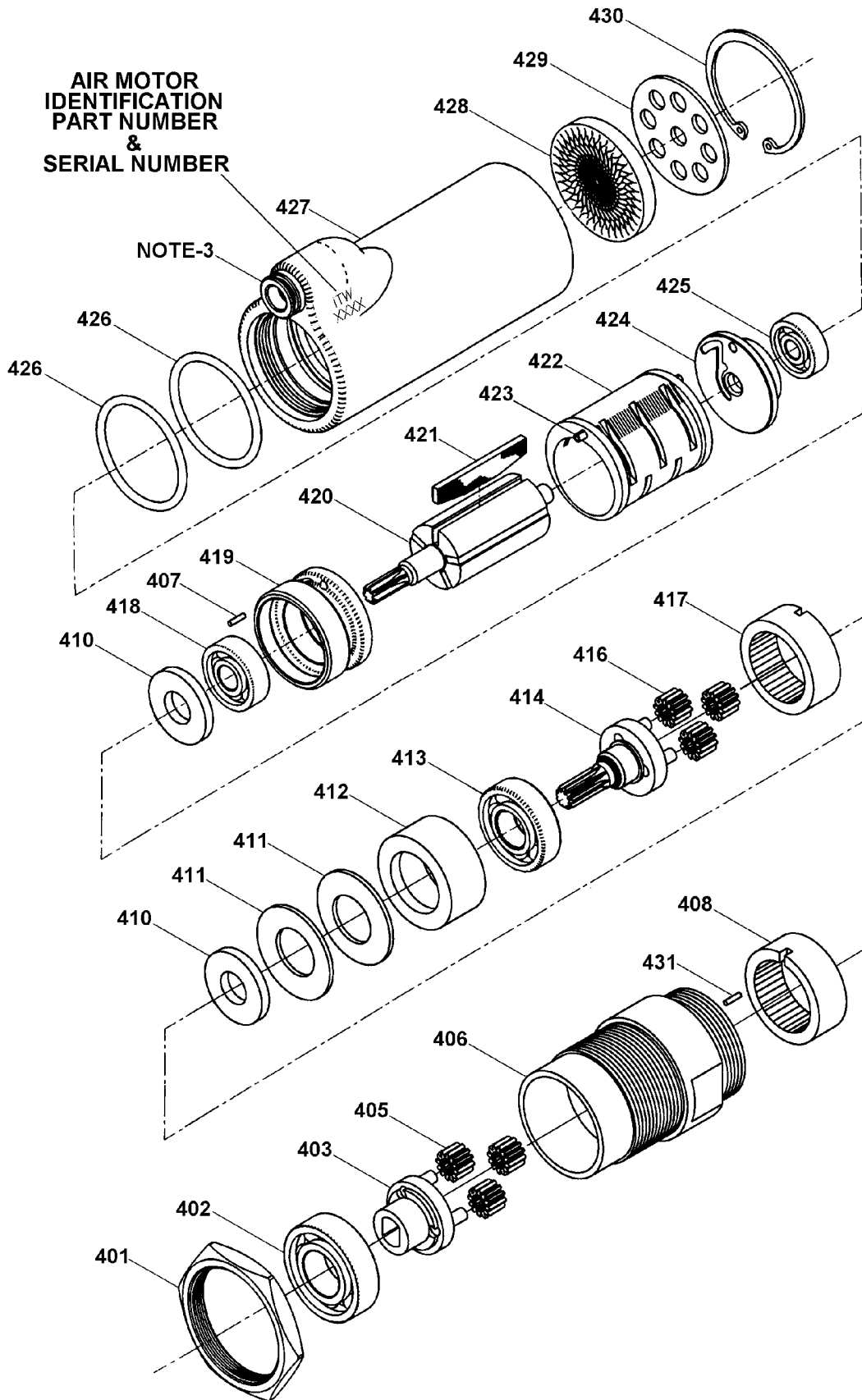
Part No. 424150

<u>KEY</u>	<u>QTY.</u>	<u>PART NO.</u>	<u>DESCRIPTION</u>
401	1	424166	Lock nut
402	1	164969	Retaining ring, N5000-118
403	1	023547	Ball bearing
404	1	424159	Idler carrier
405	3	422869	Idler gear
406	1	424153	Motor gear housing
407	1	090079	Lock pin
408	1	422870	Ring gear
410	2	423151	Adapter plate
411	2	014541	Belleville spring washer, B1250-062
412	1	424157	Spacer
413	1	306396	Ball bearing
414	1	424158	Idler carrier
416	3	024605	Idler gear assembly
417	1	024608	Ring gear
418	1	023481	Ball bearing
419	1	424155	Front end plate
420	1	424156	Rotor
421	5	422818	Vane
422	1	422815	Cylinder
423	2	424164	Spring pin, 2.5 x 10
424	1	424154	Back end plate
425	1	424161	Ball bearing
426	2	424172	O-Ring, SAE 125
427	1	424173	Motor housing assembly
428	1	424167	Muffler insert
429	1	424165	Muffler plate
430	1	424162	Truarc, N5000-145
431	1	090065	Lock pin

### **WARNING**

**Inspect all parts daily and replace them if they are worn or broken. Failure to do this can affect a product's operation and could result in serious personal injury.**

**AIR MOTOR  
IDENTIFICATION  
PART NUMBER  
&  
SERIAL NUMBER**



## PARTS LIST, AIR MOTOR

**NOTE: For repair parts only. No longer available as a new assembly!**

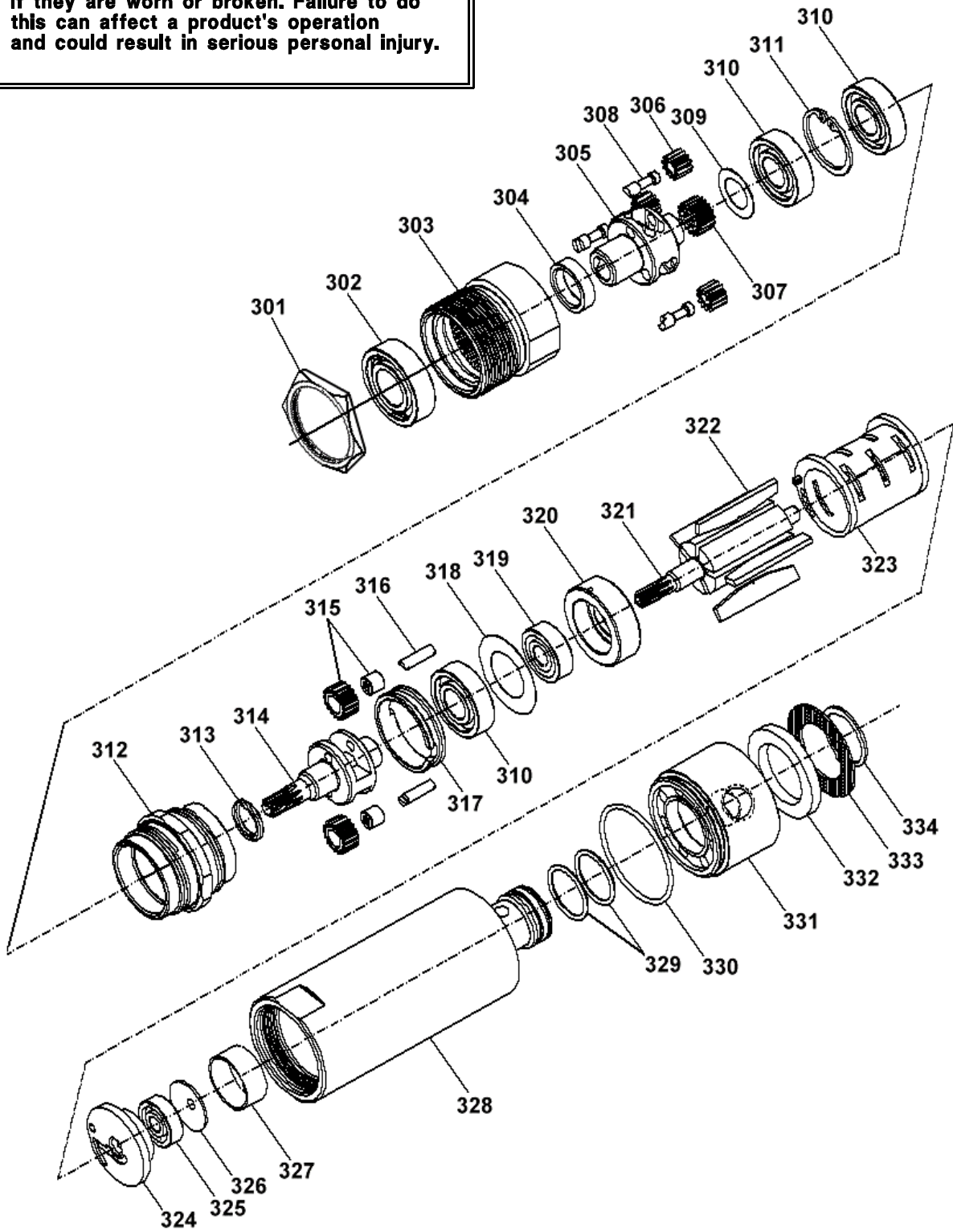
Part No. 423700

<u>KEY</u>	<u>QTY.</u>	<u>PART NO.</u>	<u>DESCRIPTION</u>
301	1	422150	LOCK NUT
302	1	264313	BEARING, FAFNIR #9102K-FS118
303	1	422633	GEAR CASE
304	1	422632	SPACER
305	1	422631	SPINDLE
306	3	422637	PLANET GEAR ASSEMBLY
307	1	422628	GEAR
308	3	422627	PIN
309	1	422626	SPACER
310	3	023097	BEARING, FAFNIR #9101K-FS118
311	1	423701	RETAINGIN RING, TRUARC #N5000-106
312	1	422625	GEAR CASE
313	1	422624	SPACER
314	1	422623	SPINDLE
315	2	422622	PLANET ASSEMBLY
316	2	422621	SHAFT
317	1	423702	SPACER
318	1	423703	SPACER
319	1	006554	BEARING, FAFNIR #38KDD
320	1	423704	FRONT END PLATE
321	1	422618	ROTOR
322	5	422617	VANE
323	1	422616	CYLINDER ASSEMBLY
324	1	423705	REAR END PLATE
325	1	250300	BEARING, FAFNIR #36KDD
326	1	423825	SHIELD
327	1	423826	CAP
328	1	423827	HOUSING
329	2	092747	O-RING SAE #18
330	1	092044	O-RING SAE #29
331	1	423828	CAP
332	1	423829	FILLER
333	1	423830	SCREEN
334	1	185765	RETAINING RING, TRUARC #5100-87

- When ordering parts, please show tool model, part number and description.

# **!WARNING**

Inspect all parts daily and replace them if they are worn or broken. Failure to do this can affect a product's operation and could result in serious personal injury.



## PARTS LIST, AIR MOTOR, MODEL LZB-33A-007-58 (AC)

**NOTE: For repair parts only. No longer available as a new assembly!**

Part No. 306710 (AC)

<u>KEY</u>	<u>QTY.</u>	<u>PART NO.</u>	<u>DESCRIPTION</u>
<u>201</u>	<u>1</u>	<u>306941</u>	<u>Ball Bearing</u>
<u>202</u>	<u>1</u>	<u>306942</u>	<u>Pin</u>
<u>203</u>	<u>1</u>	<u>306943</u>	<u>Cylinder</u>
<u>204</u>	<u>1</u>	<u>306944</u>	<u>Rotor</u>
<u>205</u>	<u>5</u>	<u>306945</u>	<u>Vane</u>
<u>206</u>	<u>1</u>	<u>306946</u>	<u>Key</u>
<u>207</u>	<u>1</u>	<u>306947</u>	<u>End plate</u>
<u>208</u>	<u>1</u>	<u>306948</u>	<u>Ball bearing</u>
<u>209</u>	<u>1</u>	<u>306949</u>	<u>End plate</u>
<u>210</u>	<u>1</u>	<u>306950</u>	<u>Spacer</u>
<u>211</u>	<u>4</u>	<u>306951</u>	<u>Ball bearing</u>
<u>212</u>	<u>1</u>	<u>306952</u>	<u>Gear rim</u>
<u>213</u>	<u>2</u>	<u>306953</u>	<u>Spring washer</u>
<u>214</u>	<u>1</u>	<u>306711</u>	<u>Gear rim</u>
<u>215</u>	<u>1</u>	<u>306713</u>	<u>Planet shaft</u>
<u>216</u>	<u>2</u>	<u>306954</u>	<u>Axle pin</u>
<u>217</u>	<u>2</u>	<u>306955</u>	<u>Gear wheel assembly (Both must be replaced at same time.)</u>
<u>219</u>	<u>1</u>	<u>306957</u>	<u>Planet shaft</u>
<u>220</u>	<u>2</u>	<u>306958</u>	<u>Axle pin</u>
<u>221</u>	<u>2</u>	<u>306959</u>	<u>Gear wheel assembly (Both must be replaced at same time.)</u>
<u>223</u>	<u>1</u>	<u>306961</u>	<u>Motor housing</u>
<u>224</u>	<u>1</u>	<u>306962</u>	<u>Backhead</u>
<u>225</u>	<u>1</u>	<u>306963</u>	<u>O-Ring</u>
<u>226</u>	<u>2</u>	<u>092747</u>	<u>O-Ring, SAE #2-018</u>
<u>227</u>	<u>1</u>	<u>306964</u>	<u>Circlip</u>
<u>228</u>	<u>1</u>	<u>306965</u>	<u>Silencer</u>
<u>229</u>	<u>1</u>	<u>306966</u>	<u>Filter</u>

- When ordering parts, please show tool model, part number and description.
- Wearing parts are usually limited to those underlined and should be stocked.

The following sub-assemblies may be purchased complete:

Planet shaft assembly (Key numbers 215-217), Part No. 306969.  
Rotor assembly (Key numbers 201-209), Part No. 306970.  
Planet shaft assembly (Key numbers 219-221), Part No. 422089.

# **!WARNING**

Inspect all parts daily and replace them if they are worn or broken. Failure to do this can affect a product's operation and could result in serious personal injury.

