

## PARTS LIST, TOOL

KEY	QTY	PART NO.	DESCRIPTION
1	1	422499	PNSC2 TENSION UNIT
2	1	422482	ENERGIZING SPRING
3	1	422472	FEED WHEEL
4	2	422801	AIR HOSE ASSEMBLY
5	1	422848	FOOT
6	1	422410	CYLINDER
7	1	020680	O-RING (#112)
8	2	422849	FLAT WASHER .625"OD x .320"ID x .020"
9	1	422477	PISTON
10	1	422837	M8 HEX LOCK NUT
11	1	023094	O-RING
12	1	422459	GASKET
13	1	422457	CYLINDER COVER
14	1	422460	PROTECTIVE COVER
15	15	011214	SHCS M5 x 16
16	1	422485	TENSION VALVE SPACER
17	4	092772	O-RING (#14)
18	1	422851	TENSION VALVE SPRING LC-032E-11
19	2	020701	O-RING .208"ID x .348OD" x .070"
20	1	422416	TENSION VALVE STEM
21	1	422415	TENSION VALVE SLEEVE
22	1	422487	WEAR PLUG
23	1	023043	VALVE SPRING
24	3	023046	SEAL
25	1	023042	SLEEVE SPACER
26	3	023040	VALVE SLEEVE
27	2	008596	O-RING (#111)
28	1	023041	VALVE STEM
29	1	422461	RAM
30	1	422462	RAM PIN
31	2	422844	JAW LINK (34)
	2	422842	JAW LINK (58,12)
32	1	306755	LOCK NUT M5 POLY INSERT
33	1	012905	FRONT PLATE (34)
	1	023030	FRONT PLATE (58)
	1	023062	FRONT PLATE (12)
34	2	306394	JAW (134)
	2	422832	JAW (58)
	2	422450	JAW (12)
35	2	023048	LINK PIN
36	2	306392	NOTCHER (34)
	2	023026	NOTCHER (58, 12)
37	1	023027	NOTCHER SPACER
38	2	023028	SIDE PLATE SPACER
39	1	012902	REAR PLATE (34)
	1	023031	REAR PLATE (58, 12)
40	2	023029	NOTCHER PIN
41	1	422839	FSHCS M5 x 25
42	2	422802	SEALER PIN
43	1	422803	KEEPER
44	2	422806	BUSHING GARLOCK 12mm ID x 4mm OD x 8mm LG
45	1	422856	φ4 x 20 LG TAPER PIN (DIN 1472)
46	1	422476	PIVOT SHAFT
47	1	422452	HANDLE
48	5	306079	LOCKWASHER M5
49	1	422809	BEARING TORRINGTON M-681, 3/8 ID x 9/16 OD x 1/2, CL-END
50	1	422805	BEARING, GARLOCK MB1008OU, 10MM ID x 12MM OD x 8MM
51	1	422469	OUTER LINK

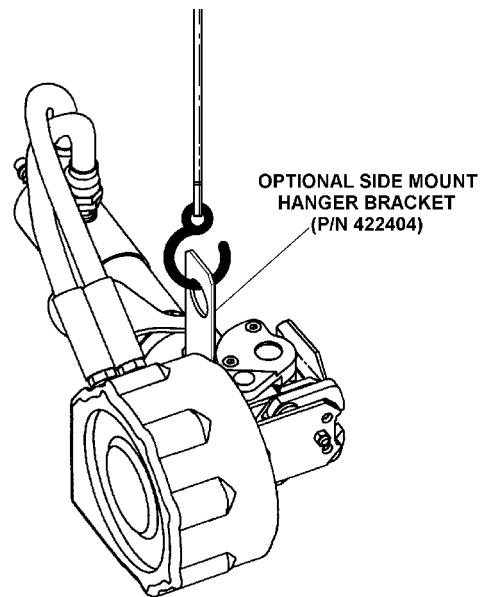
KEY	QTY	PART NO.	DESCRIPTION
52	1	422464	CUTTER BLOCK
53	2	422804	SPRING LC-035C-6
54	1	422492	ANGLE CUTTER
55	2	422835	φ5 x 12 DOWEL PIN
56	1	433304	WARNING LABEL
57	1	422847	HANGER BRACKET
58	1	422854	M6 x 40 LG ROLL PIN (DIN 1481)
59	1	020913	O-RING
60	1	422858	DOUBLE SEAL O-RING, QUATTRO SEAL (#112)
61	1	251299	φ4 x 12 DOWEL PIN
62	1	274466	3MM HEX KEY
63	1	274467	4MM HEX KEY
64	1	422421	SET SCREW, M5 X 12

### **WARNING**

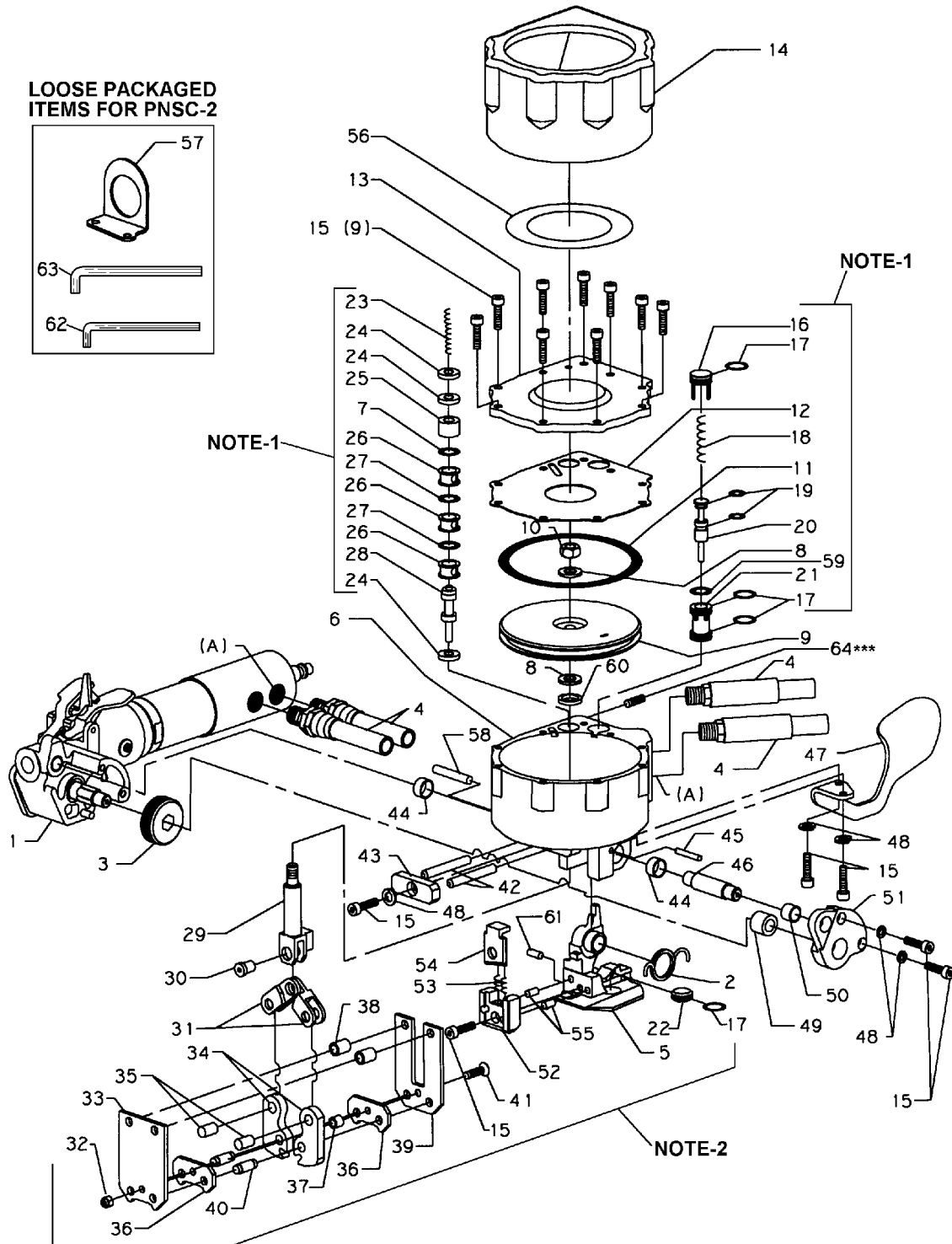
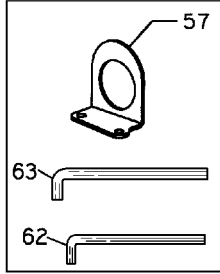
**Inspect all parts daily and replace them if they are worn or broken. Failure to do this can affect a product's operation and could result in serious personal injury.**

### OPTIONAL SIDE MOUNT HANGER (PART NUMBER 422404)

The PNSC-2 can be equipped with this optional side hanger for applications which require horizontal strapping.



**LOOSE PACKAGED  
ITEMS FOR PNSC-2**



\*\*\* To be serviced only by an authorized Signode Service facility.

**NOTES:**

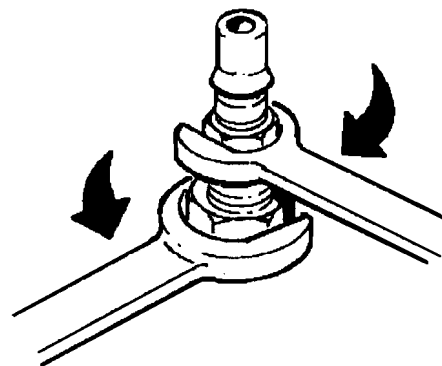
1. Reassemble the tension/sealing valve parts using White Lubriplate GR-132 grease (Signode P/N 422792 or equivalent).
2. Reassemble the sealer parts, pivot shaft, cutter and outer link using Black Lubriplate 3000W grease (Signode P/N 422793) or equivalent.

## PARTS LIST, TENSION UNIT (422299 STD) (422868 HT)

KEY	QTY	TENSION UNIT 422299	TENSION UNIT 422868	DESCRIPTION
		PART NO.	PART NO.	
1	3	011214	011214	M5 x 16 SHCS
2	1	422470	422470	GEAR CASE COVER
3	1	422473	422473	GEAR CASE GASKET
4	1	023445	023445	BEARING FAFNIR S5K
5	1	023421	023421	WORM GEAR
6	1	023443	023443	BEARING
7	1	422455	422455	GEAR HOUSING
8	1	256791	256791	DOWEL PIN 0 5 x 14MM
9	1	422474	422474	FEED WHEEL SHAFT
10	1	008596	008596	O-RING
11	1	422827	422827	BEARING TORRINGTON JT-89
12	1	422805	422805	BEARING GARLOCK 1008D(J
13	1	422488	422488	RING GEAR LOCK SCREW
14	1	422843	422843	M6 x 16 SHSS
15	1	422486	422486	LOCK LEVER PIN
16	1	422838	422838	LEVER PIVOT PIN
17	1	022812	022812	SPRING LEE LC-026C-5
18	1	422483	422483	TENSION LEVER SPRING
19	1	422428	422428	TENSION LEVER
20	1	422484	422484	SEAL LEVER SPRING
21	1	422493	422493	TENSION LOCK LEVER
22	1	422429	422429	SEAL LEVER
23	1	422466	422466	RETAINING RING
24	1	008756	008756	BEARING FAFNIR 7203
25*	1	422826	422878	WORM ASSEMBLY
26*	3	422471	-	16T IDLER GEAR
	3	-	306436	17T IDLER GEAR
27	1	422481	422481	RING GEAR
28	1	008781	008781	SPACER
29	1	422825	422825	GEAR HOUSING
30	1	023551	023551	SEAL
31	1	422821	422821	MOTOR RING NUT
32	1	422823	422823	RETAINING RING
33	2	023481	023481	BEARING
34*	1	422833	422438	IDLER CARRIER ASSEMBLY
35	3	024607	024607	IDLER GEAR
36	1	024608	024608	RING GEAR
37	1	306612	306612	NEEDLE ROLLER
38	1	422822	422822	WASHER PLASTIC
39	2	014541	014541	BELLEVILLE WASHER
40	1	422819	422819	FRONT END PLATE
41	1	422815	422815	CYLINDER
42	1	024602	024602	SPACER
43	1	422817	422817	ROTOR
44	5	422818	422818	VANE
45	1	422814	422814	BACK END PLATE
46	1	024633	024633	BEARING
47	1	422816	422816	ALIGN PIN
48	1	422813	422813	MOTOR HOUSING
49*	1	422810	422866	DEFLECTOR
50	1	422824	422824	MUFFLER
51*	1	422811	422865	DEFLECTOR END
52	1	024631	024631	AIR MOTOR STRAINER
53	1	020704	020704	HANSON PLUG
54	1	020701	020701	O-RING
55	1	422812	422812	RESTRICTION VALVE
56	1	422834	422834	RING GEAR SPACER
57	1	422853	422853	O-RING (127)

### HANSEN PLUG

When removing/connecting the Hansen plug, hold the air motor inlet fitting with one wrench and tighten the Hansen plug with another. If this is not done, one can loosen or over tighten the air motor housing, thus affecting tool performance.



### WARNING

Inspect all parts daily and replace them if they are worn or broken. Failure to do this can affect a product's operation and could result in serious personal injury.

\* Items which are unique to each tension unit.

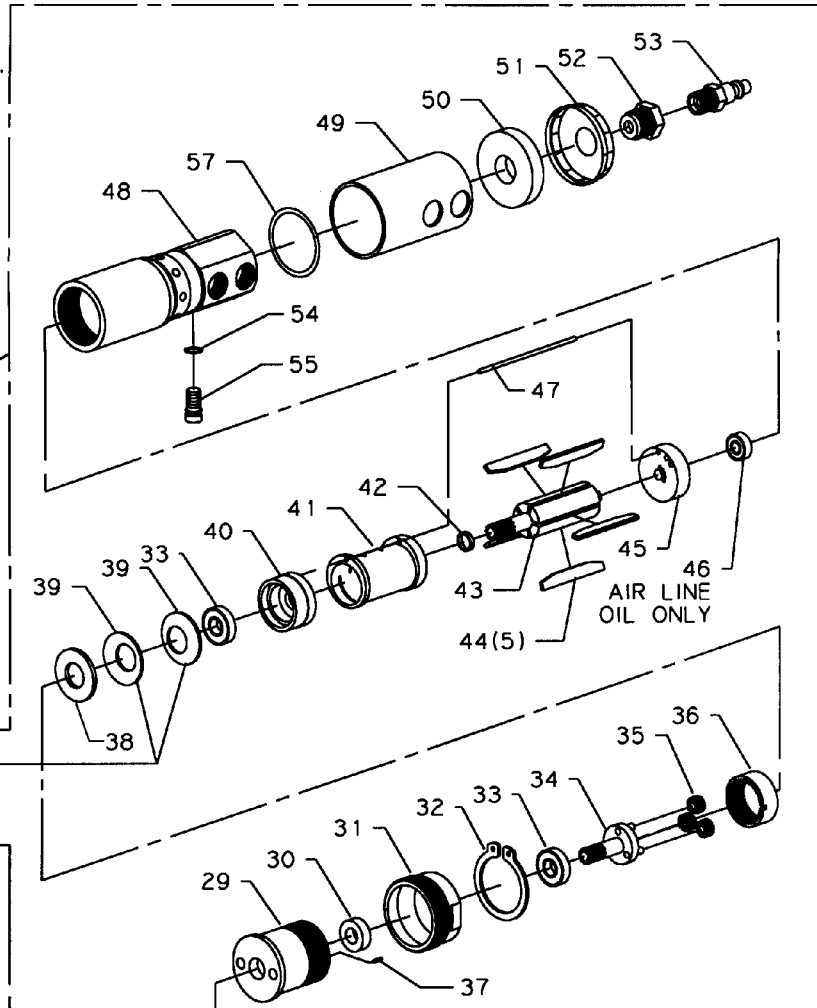
**NOTE:**

PACK GEAR HOUSING (KEY 7), IDLER GEARS, AND BEARINGS (EXCEPT KEY 49) WITH NON FLUID OIL K55 (NON FLUID COMPANY OR EQUIVALENT). GEAR HOUSING TO BE ABOUT 1/3 FULL. ALL OTHER MOTOR PARTS TO BE LUBED WITH AIR LINE OIL. VANES (KEY 47) MUST SOAK IN AIR LINE OIL OVERNIGHT BEFORE ASSEMBLY.

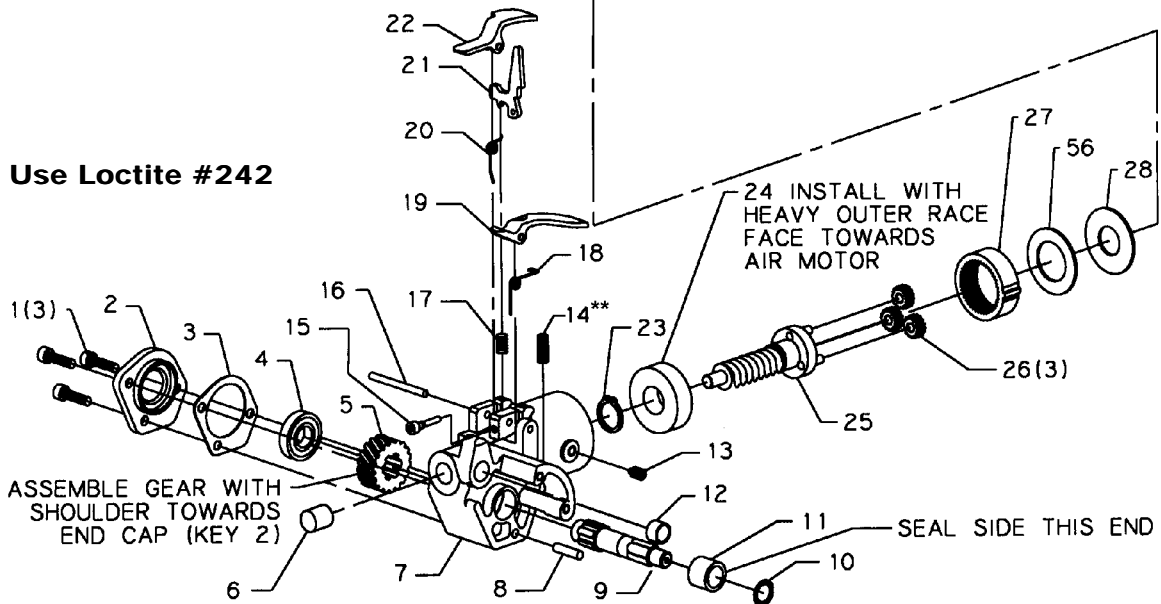
**AIR MOTOR:**

**422830 (422299 STD)**  
**422862 (422862 HT)**

WASHERS TO BE PLACED BACK TO BACK WITH CUPPED SHAPE OUT ) (



**\*\* Use Loctite #242**



**NOTES:**

1. Key number 53 (Hanson Plug P/N 020704) is packaged loose with every new PNSC-2.
2. Air Motors (P/N 422830 & 422862) shown above can be ordered as a separate assembly from Signode Service.