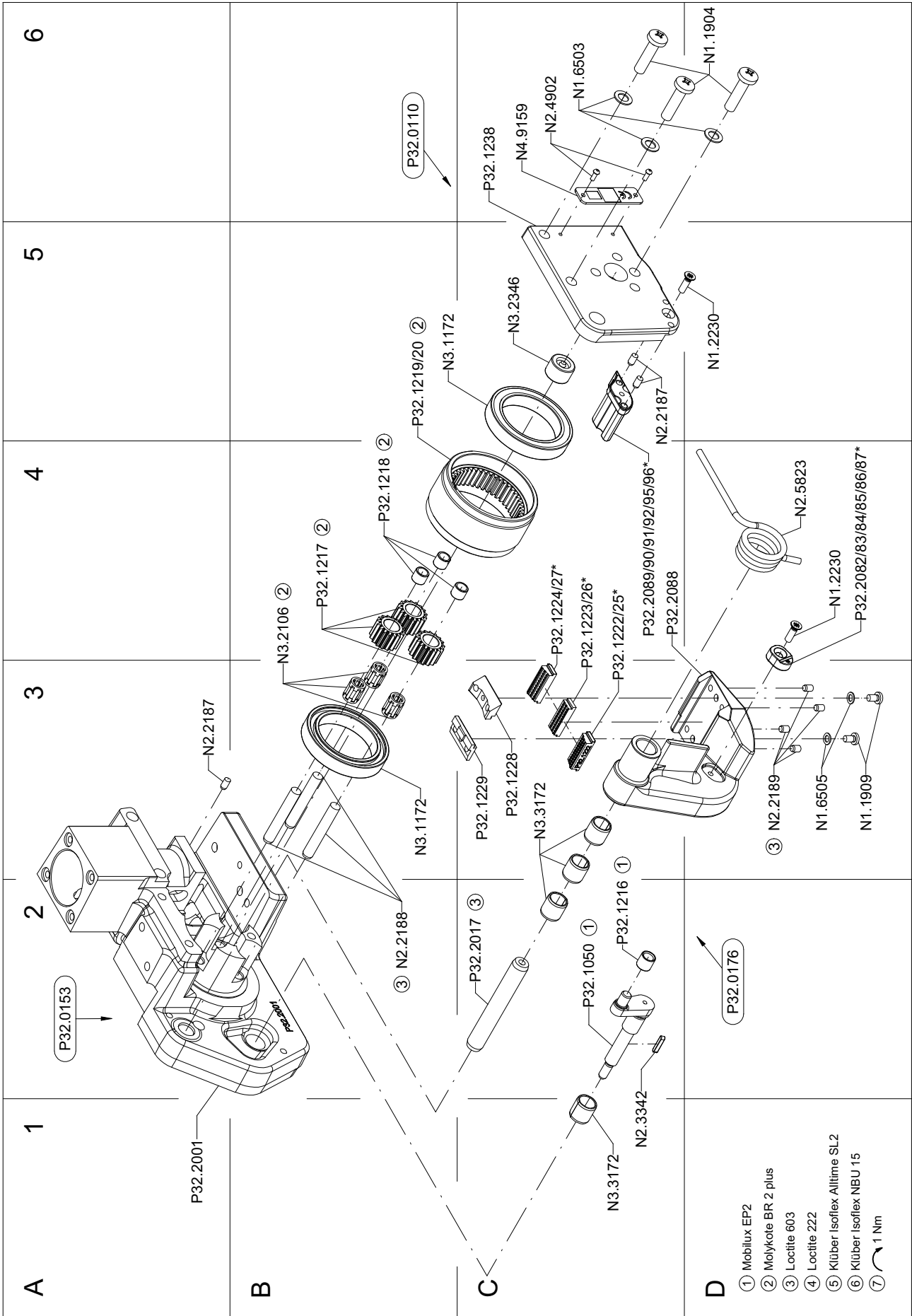
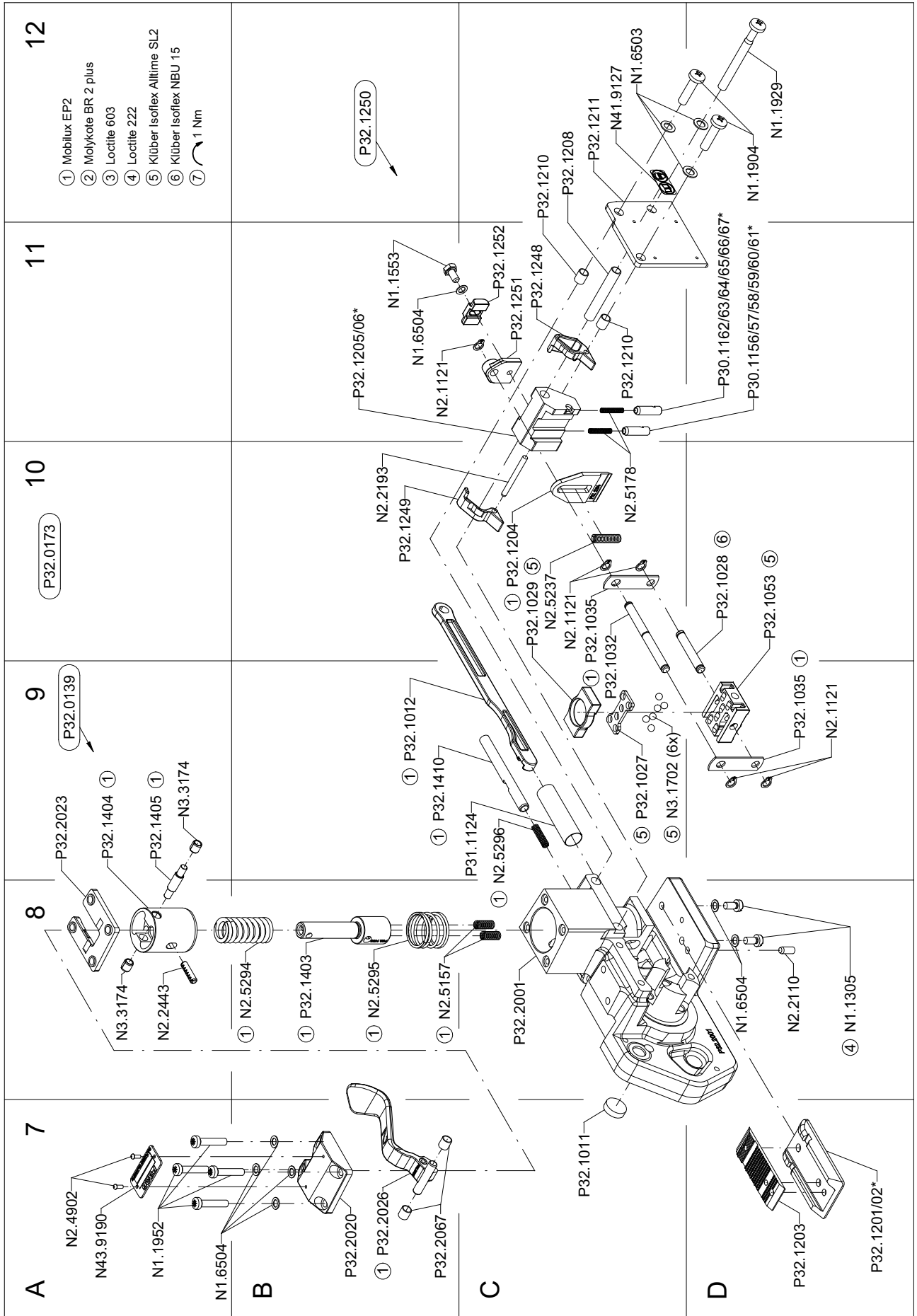


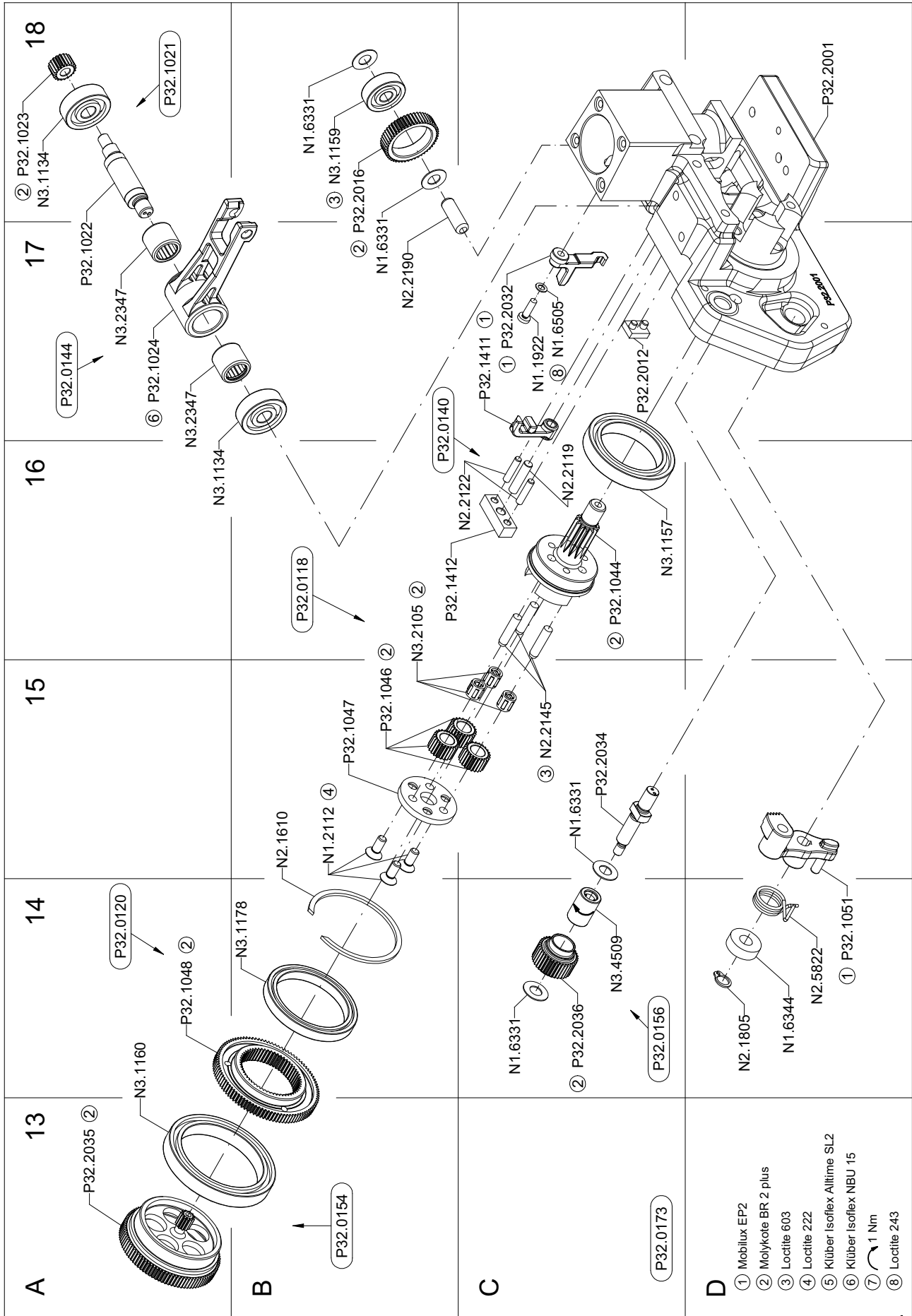
2 DRAWING P326.0001.01

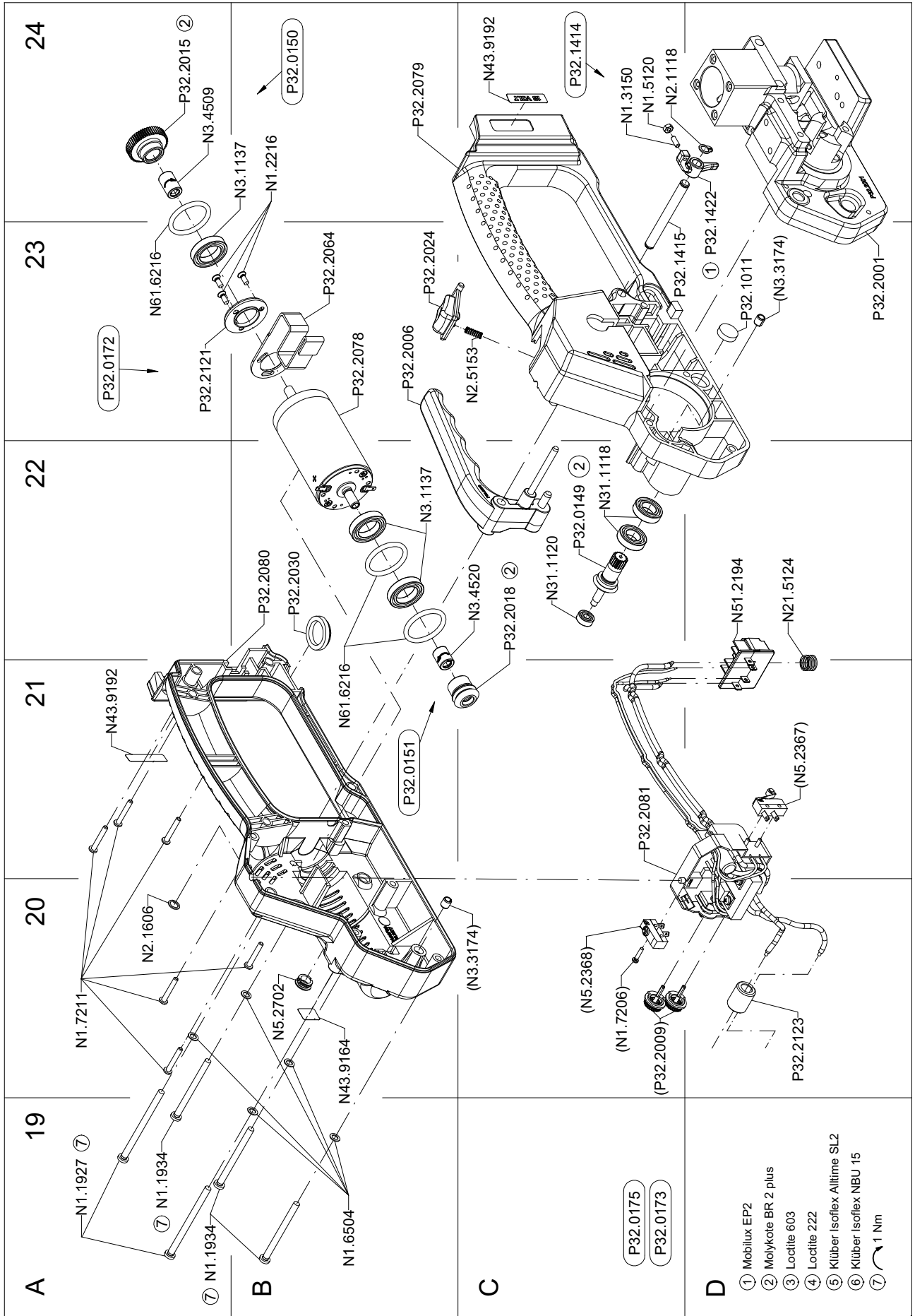


*See 1.8 Ordering spare parts



*See 1.8 Ordering spare parts





3 SPARE PARTS LIST P326

3.1 Type independent spare parts P326.0001.01

Item-No.		in group	Pcs.	Description	Dimension	Field
N1.1305			2	SCREW	M4 X 7.8	D8
N1.1553		P32.1250	1	HEXAGON SCREW	M4 X 8	B11
N1.1904			5	SCREW	M5 X 20	D6+
N1.1909			2	FLAT HEAD SCREW	M3 X 5	D3
N1.1922		P32.0173	1	SCREW	M3 X 10	C17
N1.1927		P32.0173	2	FLAT HEAD SCREW	M4 X 60	A19
N1.1929			1	SCREW	M5 X 50	D12
N1.1934		P32.0173	3	FLAT HEAD SCREW	M4 X 50	A19
N1.1952		P32.0173	4	FLAT HEAD SCREW	M4 X 20	A7
N1.2112		P32.0118	3	COUNTERSUNK SCREW	M4 X 10	B15
N1.2216		P32.0172	3	COUNTERSUNK SCREW	M3 X 8	B24
N1.2230			2	COUNTERSUNK SCREW	M3 X 10	D4+
N1.3150		P32.1414	1	SOCKET SET SCREW	M3 X 8	C24
N1.5120		P32.1414	1	HEXAGON NUT	M3	C24
N1.6331		P32.0173	4	SPACER WASHER	6 X 12 X 0.5	C14+
N1.6344		P32.0173	1	SPACER PIECE	6.3 X 15 X 5	D14
N1.6503			6	SAFETY WASHER	M5	C6+
N1.6504			2	SAFETY WASHER	M4	D8
N1.6504		P32.0173	9	SAFETY WASHER	M4	A7+
N1.6504		P32.1250	1	SAFETY WASHER	M4	B11
N1.6505			2	SAFETY WASHER	M3	D3
N1.6505		P32.0173	1	SAFETY WASHER	M3	C17
N1.7206		P32.2081	1	PT-SCREW	2.2 X 10	C20
N1.7211		P32.0175	6	PT-SCREW	3 X 20	A20
N21.5124		P32.0175	1	PRESSURE SPRING	0.9 X 10 X 15/5.5	D22
N2.1118		P32.0175	1	SECURITY RING	6	C24
N2.1121			1	SECURITY RING	5	B11
N2.1121		P32.0173	4	SECURITY RING	5	D9+
N2.1606		P32.0175	1	SPRING RING	SW6	A20
N2.1610		P32.0173	1	SPRING RING	SB44	B15
N2.1805		P32.0173	1	TENSIONING RING	6	D14
N2.2110		P32.0153	1	PARALLEL PIN	4 m6 X 10	D8
N2.2119		P32.0140	1	PARALLEL PIN	4 m6 X 18	C16
N2.2122		P32.0140	2	PARALLEL PIN	3 h6 X 14	C16
N2.2145		P32.0118	3	PARALLEL PIN	4 h6 X 18	C15
N2.2187		P32.0110	2	PARALLEL PIN	3 m6 X 6	C5
N2.2187		P32.0153	1	PARALLEL PIN	3 m6 X 6	A3
N2.2188		P32.0153	3	PARALLEL PIN	5 h6 X 34	B2
N2.2189		P32.0176	4	PARALLEL PIN	3 m6 X 5	D3
N2.2190		P32.0173	1	PARALLEL PIN	6 h6 X 18	B17
N2.2193			1	PARALLEL PIN	3 m6 X 32	B10
N2.2443		P32.0139	1	DOWEL PIN	4 X 15	A8
N2.3342		P32.0173	1	FEATHER KEY	2 X 2 X 10	C1
N2.4902			4	HAMMER HEAD BOLT	1.85 X 4.76	C6+
N2.5153		P32.0175	1	PRESSURE SPRING	0.4 X 4.1 X 16/10.5	C23
N2.5157		P32.0173	2	PRESSURE SPRING	0.6 X 4.8 X 20/15.5	B8
N2.5178			2	PRESSURE SPRING	0.32 X 2.82 X 20.5/ 20.5	C10
N2.5237			1	PRESSURE SPRING	0.8 X 4.8 X 25/18.5	C10
N2.5294		P32.0139	1	PRESSURE SPRING	2.5 X 15 X 46.5/9.5	B8

[] = Group

* = Wearing parts

Item-No.		in group	Pcs.	Description	Dimension	Field
N2.5295		P32.0173	1	PRESSURE SPRING	1.5 X 21 X 27/5.5	B8
N2.5296		P32.0173	1	PRESSURE SPRING	0.5 X 4 X 24/16.5	C9
N2.5822		P32.0173	1	TORSION SPRING	1.25 X 12/3.75	D14
N2.5823			1	TORSION SPRING	2.8 X 17/4	D4
N31.1118		P32.0175	2	BALL BEARING	10 X 19 X 5	C22
N31.1120		P32.0175	1	BALL BEARING	4 X 11 X 4	C22
N3.1134		P32.0173	1	BALL BEARING	7 X 22 X 7	A16
N3.1134		P32.1021	1	BALL BEARING	7 X 22 X 7	A18
N3.1137		P32.0150	1	BALL BEARING	15 X 24 X 5	B24
N3.1137		P32.0175	2	BALL BEARING	15 X 24 X 5	B22
N3.1157		P32.0118	1	BALL BEARING	30 X 42 X 7	C16
N3.1159		P32.0173	1	BALL BEARING	6 X 19 X 6	B18
N3.1160		P32.0154	1	BALL BEARING	40 X 52 X 7	A14
N3.1172			2	BALL BEARING	30 X 42 X 7	B3+
N3.1178		P32.0120	1	BALL BEARING	35 X 44 X 5	B14
N3.1702		P32.0173	6	BALL	4 MM	C9
N3.2105		P32.0118	3	NEEDLE CAGE	K 4 X 7 X 7 TN	B16
N3.2106			3	NEEDLE CAGE	K 5 X 8 X 10 TN	B4
N3.2346		P32.0110	1	NEEDLE CASE	8 X 12 X 8	C5
N3.2347		P32.0144	2	NEEDLE BUSH	10 X 14 X 12	A17
N3.3172		P32.0153	1	SLIDE-BEARING	8 X 10 X 10	C1
N3.3172		P32.0176	3	SLIDE-BEARING	8 X 10 X 10	C3
N3.3174		P32.0139	2	SLIDE-BEARING	4 X 5.5 X 6	A8+
N3.3174		P32.2079	1	SLIDE-BEARING	4 X 5.5 X 6	D23
N3.3174		P32.2080	1	SLIDE-BEARING	4 X 5.5 X 6	C20
N3.4509		P32.0150	1	NEEDLE FREE WHEELING	6 X 10 X 15	A24
N3.4509		P32.0156	1	NEEDLE FREE WHEELING	6 X 10 X 15	C14
N3.4520		P32.0151	1	FREE-WHEELING	6 X 10 X 12	C22
N41.9127			1	ADHESIVE LABEL	20 X 10 X 0.1	C12
N43.9164			1	ADHESIVE LABEL	WEEE	B20
N43.9190			1	TYPE PLATE	<<P326>>	A7
N43.9192		P32.0175	2	ADHESIVE LABEL	18 Volt	A21+
N4.9159			1	LABEL	<<CE>>	C6
N51.2194		P32.0175	1	INSERTATION PART		D22
N5.2367		P32.2081	1	MICRO SWITCH		D21
N5.2368		P32.2081	1	MICRO SWITCH		C20
N5.2702			1	COVER		B20
N61.6216		P32.0175	3	O-RING	23.5 X 3	B21+
P31.1124		P32.0153	1	TUBE		C9
[P32.0110]			1	END COVER		B6
[P32.0118]		P32.0173	1	IDLER STEP		B16
[P32.0120]		P32.0173	1	WHEEL		A14
[P32.0139]		P32.0173	1	SPRING PACKAGE		A9
[P32.0140]		P32.0173	1	INSERTATION PART		B17
[P32.0144]		P32.0173	1	ROCKER		A17
[P32.0149]		P32.0175	1	PINION		C22
[P32.0150]		P32.0175	1	GEAR WHEEL		B24
[P32.0151]		P32.0175	1	CONICAL GEAR WHEEL		B21
[P32.0153]		P32.0173	1	BODY		A2
[P32.0154]		P32.0173	1	GEAR WHEEL		B13
[P32.0156]		P32.0173	1	GEAR WHEEL		C14
[P32.0172]		P32.0175	1	MOTOR		A23
[P32.0173]			1	BASE MODEL		A10+
[P32.0175]		P32.0173	1	DRIVE		C19

[] = Group

* = Wearing parts

Item-No.		in group	Pcs.	Description	Dimension	Field
[P32.0176]			1	TENSIONING BODY		D2
P32.1011		P32.0173	1	FELT		C7
P32.1011		P32.0175	1	FELT		D23
P32.1012		P32.0173	1	COUPLER		B9
[P32.1021]		P32.0173	1	WELDING EXCENTRIC		A18
P32.1022		P32.1021	1	WELDING EXCENTRIC		A17
P32.1023		P32.1021	1	PINION		A18
P32.1024		P32.0144	1	ROCKER		A17
P32.1027		P32.0173	1	BALL CAGE		C9
P32.1028		P32.0173	1	BOLT		D10
P32.1029		P32.0173	1	THRUST PIECE		C10
P32.1032		P32.0173	1	DRIVING PIN		C9
P32.1035		P32.0173	2	DRIVER		D9+
P32.1044		P32.0118	1	PLANET SHAFT		C16
P32.1046		P32.0118	3	IDLER GEAR		B15
P32.1047		P32.0118	1	COVER		B15
P32.1048		P32.0120	1	WHEEL		A14
P32.1050		P32.0173	1	FRONT TOGGLE LINK		C2
P32.1051		P32.0173	1	LEVER		D14
P32.1053	*	P32.0173	1	WELDING GRIPPER		D10
P32.1203	*		1	WELDING STOP GRIPPER		D7
P32.1204	*		1	CUTTER		C10
P32.1208			1	CENTERING SLEEVE		C12
P32.1210			2	CENTERING SLEEVE		C11+
P32.1211			1	COVER		C12
P32.1216			1	PRESSURE ROLLER		C2
P32.1217			3	IDLER GEAR		B4
P32.1218			3	DOWEL		B4
P32.1228			1	HOLDER		C3
P32.1229			1	HOLDER		C3
P32.1238		P32.0110	1	END COVER		C6
P32.1248			1	SEESAW LEVER		C11
P32.1249			1	SEESAW LEVER		B10
[P32.1250]			1	COUPLER		B12
P32.1251		P32.1250	1	COUPLER		C11
P32.1252		P32.1250	1	THRUST PIECE		C11
P32.1403		P32.0139	1	SPRING BOLT		B8
P32.1404		P32.0139	1	SPRING SLIDE		A9
P32.1405		P32.0139	1	ROLLER		A9
P32.1410		P32.0173	1	COUPLER		B9
P32.1411		P32.0173	1	LEVER		C17
P32.1412		P32.0140	1	INSERTATION PART		B16
[P32.1414]		P32.0175	1	LEVER		C24
P32.1415		P32.0175	1	HANDLE SHAFT		C23
P32.1422		P32.1414	1	LEVER		D24
P32.2001		P32.0153	1	BODY		A1+
[P32.2006]		P32.0175	1	HANDLE LEVER		B23
P32.2009		P32.2081	2	TURNING BUTTON		C20
P32.2012		P32.0173	1	GUIDE		C17
P32.2015		P32.0150	1	GEAR WHEEL		A24
P32.2016		P32.0173	1	GEAR WHEEL		B18
P32.2017		P32.0153	1	SWIVEL SHAFT		C2
P32.2018		P32.0151	1	CONICAL GEAR WHEEL		C22
P32.2020		P32.0173	1	COVER		B7

[] = Group

* = Wearing parts

Item-No.		in group	Pcs.	Description	Dimension	Field
P32.2023		P32.0173	1	FIXING PLATE		A9
P32.2024		P32.0175	1	PRESSURE BUTTON		B23
[P32.2026]		P32.0173	1	LEVER		B7
P32.2030		P32.0175	1	DISK		B22
P32.2032		P32.0173	1	HOOK		C17
P32.2034		P32.0173	1	SHAFT		C15
P32.2035		P32.0154	1	GEAR WHEEL		A13
P32.2036		P32.0156	1	GEAR WHEEL		C14
P32.2064		P32.0172	1	COOLING PLATE		B23
P32.2067		P32.0173	2	CENTERING SLEEVE		B7
[P32.2078]	*	P32.0172	1	ELECTRIC MOTOR		B23
[P32.2079]		P32.0175	1	MOTOR HOUSING		B24
[P32.2080]		P32.0175	1	MOTOR HOUSING		B22
[P32.2081]		P32.0175	1	CIRCUIT BOARD		C21
P32.2088		P32.0176	1	TENSIONING BODY		C4
P32.2121		P32.0172	1	DISK		A23
[P32.2123]		P32.0175	1	DOWEL		D20

[] = Group

* = Wearing parts

3.2 Type dependent spare parts P326.0001.01

Type 43.2201.01

43.2201.01	P326/10/0.40-0.64			P326.0001.01		26.01.10
Item-No.		in group	Pcs.	Description	Dimension	Field
P30.1156			1	GUIDE PIN		D11
P30.1162			1	GUIDE PIN		D11
P32.1201			1	STEEL INSERT		D7
P32.1205			1	GUIDE CASE		B11
P32.1219	*		1	TENSIONING WHEEL		B5
P32.1222	*		1	GRIPPER		C4
P32.1223	*		1	GRIPPER		C4
P32.1224	*		1	GRIPPER		C4
P32.2082			1	STRAP STOP		D4
P32.2089			1	STRAP GUIDE		C4

Type 43.2202.01

43.2202.01	P326/10/0.65-1.05			P326.0001.01		26.01.10
Item-No.		in group	Pcs.	Description	Dimension	Field
P30.1156			1	GUIDE PIN		D11
P30.1162			1	GUIDE PIN		D11
P32.1202			1	STEEL INSERT		D7
P32.1205			1	GUIDE CASE		B11
P32.1220	*		1	TENSIONING WHEEL		B5
P32.1225	*		1	GRIPPER		C4
P32.1226	*		1	GRIPPER		C4
P32.1227	*		1	GRIPPER		C4
P32.2082			1	STRAP STOP		D4
P32.2089			1	STRAP GUIDE		C4

Type 43.2211.01

43.2211.01	P326/11.1/0.40-0.64			P326.0001.01		26.01.10
Item-No.		in group	Pcs.	Description	Dimension	Field
P30.1158			1	GUIDE PIN		D11
P30.1164			1	GUIDE PIN		D11
P32.1201			1	STEEL INSERT		D7
P32.1205			1	GUIDE CASE		B11
P32.1219	*		1	TENSIONING WHEEL		B5
P32.1222	*		1	GRIPPER		C4
P32.1223	*		1	GRIPPER		C4
P32.1224	*		1	GRIPPER		C4
P32.2083			1	STRAP STOP		D4
P32.2090			1	STRAP GUIDE		C4

[] = Group

* = Wearing parts

Type 43.2212.01

43.2212.01		P326/11.1/0.65-1.05		P326.0001.01		26.01.10
Item-No.		in group	Pcs.	Description	Dimension	Field
P30.1158			1	GUIDE PIN		D11
P30.1164			1	GUIDE PIN		D11
P32.1202			1	STEEL INSERT		D7
P32.1205			1	GUIDE CASE		B11
P32.1220	*		1	TENSIONING WHEEL		B5
P32.1225	*		1	GRIPPER		C4
P32.1226	*		1	GRIPPER		C4
P32.1227	*		1	GRIPPER		C4
P32.2083			1	STRAP STOP		D4
P32.2090			1	STRAP GUIDE		C4

Type 43.2221.01

43.2221.01		P326/12/0.40-0.64		P326.0001.01		26.01.10
Item-No.		in group	Pcs.	Description	Dimension	Field
P30.1156			1	GUIDE PIN		D11
P30.1162			1	GUIDE PIN		D11
P32.1201			1	STEEL INSERT		D7
P32.1206			1	GUIDE CASE		B11
P32.1219	*		1	TENSIONING WHEEL		B5
P32.1222	*		1	GRIPPER		C4
P32.1223	*		1	GRIPPER		C4
P32.1224	*		1	GRIPPER		C4
P32.2084			1	STRAP STOP		D4
P32.2091			1	STRAP GUIDE		C4

Type 43.2222.01

43.2222.01		P326/12/0.65-1.05		P326.0001.01		26.01.10
Item-No.		in group	Pcs.	Description	Dimension	Field
P30.1156			1	GUIDE PIN		D11
P30.1162			1	GUIDE PIN		D11
P32.1202			1	STEEL INSERT		D7
P32.1206			1	GUIDE CASE		B11
P32.1220	*		1	TENSIONING WHEEL		B5
P32.1225	*		1	GRIPPER		C4
P32.1226	*		1	GRIPPER		C4
P32.1227	*		1	GRIPPER		C4
P32.2084			1	STRAP STOP		D4
P32.2091			1	STRAP GUIDE		C4

[] = Group

* = Wearing parts

Type 43.2223.01

43.2223.01		P326/12.7/0.40-0.64		P326.0001.01		26.01.10
Item-No.		in group	Pcs.	Description	Dimension	Field
P30.1157			1	GUIDE PIN		D11
P30.1163			1	GUIDE PIN		D11
P32.1201			1	STEEL INSERT		D7
P32.1206			1	GUIDE CASE		B11
P32.1219	*		1	TENSIONING WHEEL		B5
P32.1222	*		1	GRIPPER		C4
P32.1223	*		1	GRIPPER		C4
P32.1224	*		1	GRIPPER		C4
P32.2085			1	STRAP STOP		D4
P32.2095			1	STRAP GUIDE		C4

Type 43.2224.01

43.2224.01		P326/12.7/0.65-1.05		P326.0001.01		26.01.10
Item-No.		in group	Pcs.	Description	Dimension	Field
P30.1157			1	GUIDE PIN		D11
P30.1163			1	GUIDE PIN		D11
P32.1202			1	STEEL INSERT		D7
P32.1206			1	GUIDE CASE		B11
P32.1220	*		1	TENSIONING WHEEL		B5
P32.1225	*		1	GRIPPER		C4
P32.1226	*		1	GRIPPER		C4
P32.1227	*		1	GRIPPER		C4
P32.2085			1	STRAP STOP		D4
P32.2095			1	STRAP GUIDE		C4

Type 43.2231.01

43.2231.01		P326/13/0.40-0.64		P326.0001.01		26.01.10
Item-No.		in group	Pcs.	Description	Dimension	Field
P30.1158			1	GUIDE PIN		D11
P30.1164			1	GUIDE PIN		D11
P32.1201			1	STEEL INSERT		D7
P32.1206			1	GUIDE CASE		B11
P32.1219	*		1	TENSIONING WHEEL		B5
P32.1222	*		1	GRIPPER		C4
P32.1223	*		1	GRIPPER		C4
P32.1224	*		1	GRIPPER		C4
P32.2085			1	STRAP STOP		D4
P32.2095			1	STRAP GUIDE		C4

[] = Group

* = Wearing parts

Type 43.2232.01

43.2232.01		P326/13/0.65-1.05		P326.0001.01		26.01.10
Item-No.		in group	Pcs.	Description	Dimension	Field
P30.1158			1	GUIDE PIN		D11
P30.1164			1	GUIDE PIN		D11
P32.1202			1	STEEL INSERT		D7
P32.1206			1	GUIDE CASE		B11
P32.1220	*		1	TENSIONING WHEEL		B5
P32.1225	*		1	GRIPPER		C4
P32.1226	*		1	GRIPPER		C4
P32.1227	*		1	GRIPPER		C4
P32.2085			1	STRAP STOP		D4
P32.2095			1	STRAP GUIDE		C4

Type 43.2251.01

43.2251.01		P326/15/0.40-0.64		P326.0001.01		26.01.10
Item-No.		in group	Pcs.	Description	Dimension	Field
P30.1159			1	GUIDE PIN		D11
P30.1165			1	GUIDE PIN		D11
P32.1201			1	STEEL INSERT		D7
P32.1206			1	GUIDE CASE		B11
P32.1219	*		1	TENSIONING WHEEL		B5
P32.1222	*		1	GRIPPER		C4
P32.1223	*		1	GRIPPER		C4
P32.1224	*		1	GRIPPER		C4
P32.2086			1	STRAP STOP		D4
P32.2092			1	STRAP GUIDE		C4

Type 43.2252.01

43.2252.01		P326/15/0.65-1.05		P326.0001.01		26.01.10
Item-No.		in group	Pcs.	Description	Dimension	Field
P30.1159			1	GUIDE PIN		D11
P30.1165			1	GUIDE PIN		D11
P32.1202			1	STEEL INSERT		D7
P32.1206			1	GUIDE CASE		B11
P32.1220	*		1	TENSIONING WHEEL		B5
P32.1225	*		1	GRIPPER		C4
P32.1226	*		1	GRIPPER		C4
P32.1227	*		1	GRIPPER		C4
P32.2086			1	STRAP STOP		D4
P32.2092			1	STRAP GUIDE		C4

[] = Group

* = Wearing parts

Type 43.2253.01

43.2253.01		P326/15.5/0.40-0.64		P326.0001.01		26.01.10
Item-No.		in group	Pcs.	Description	Dimension	Field
P30.1160			1	GUIDE PIN		D11
P30.1166			1	GUIDE PIN		D11
P32.1201			1	STEEL INSERT		D7
P32.1206			1	GUIDE CASE		B11
P32.1219	*		1	TENSIONING WHEEL		B5
P32.1222	*		1	GRIPPER		C4
P32.1223	*		1	GRIPPER		C4
P32.1224	*		1	GRIPPER		C4
P32.2087			1	STRAP STOP		D4
P32.2096			1	STRAP GUIDE		C4

Type 43.2254.01

43.2254.01		P326/15.5/0.65-1.05		P326.0001.01		26.01.10
Item-No.		in group	Pcs.	Description	Dimension	Field
P30.1160			1	GUIDE PIN		D11
P30.1166			1	GUIDE PIN		D11
P32.1202			1	STEEL INSERT		D7
P32.1206			1	GUIDE CASE		B11
P32.1220	*		1	TENSIONING WHEEL		B5
P32.1225	*		1	GRIPPER		C4
P32.1226	*		1	GRIPPER		C4
P32.1227	*		1	GRIPPER		C4
P32.2087			1	STRAP STOP		D4
P32.2096			1	STRAP GUIDE		C4

Type 43.2261.01

43.2261.01		P326/16/0.40-0.64		P326.0001.01		26.01.10
Item-No.		in group	Pcs.	Description	Dimension	Field
P30.1161			1	GUIDE PIN		D11
P30.1167			1	GUIDE PIN		D11
P32.1201			1	STEEL INSERT		D7
P32.1206			1	GUIDE CASE		B11
P32.1219	*		1	TENSIONING WHEEL		B5
P32.1222	*		1	GRIPPER		C4
P32.1223	*		1	GRIPPER		C4
P32.1224	*		1	GRIPPER		C4
P32.2087			1	STRAP STOP		D4
P32.2096			1	STRAP GUIDE		C4

[] = Group

* = Wearing parts

Type 43.2262.01

43.2262.01	P326/16/0.65-1.05			P326.0001.01		26.01.10
Item-No.		in group	Pcs.	Description	Dimension	Field
P30.1161			1	GUIDE PIN		D11
P30.1167			1	GUIDE PIN		D11
P32.1202			1	STEEL INSERT		D7
P32.1206			1	GUIDE CASE		B11
P32.1220	*		1	TENSIONING WHEEL		B5
P32.1225	*		1	GRIPPER		C4
P32.1226	*		1	GRIPPER		C4
P32.1227	*		1	GRIPPER		C4
P32.2087			1	STRAP STOP		D4
P32.2096			1	STRAP GUIDE		C4

[] = Group

* = Wearing parts