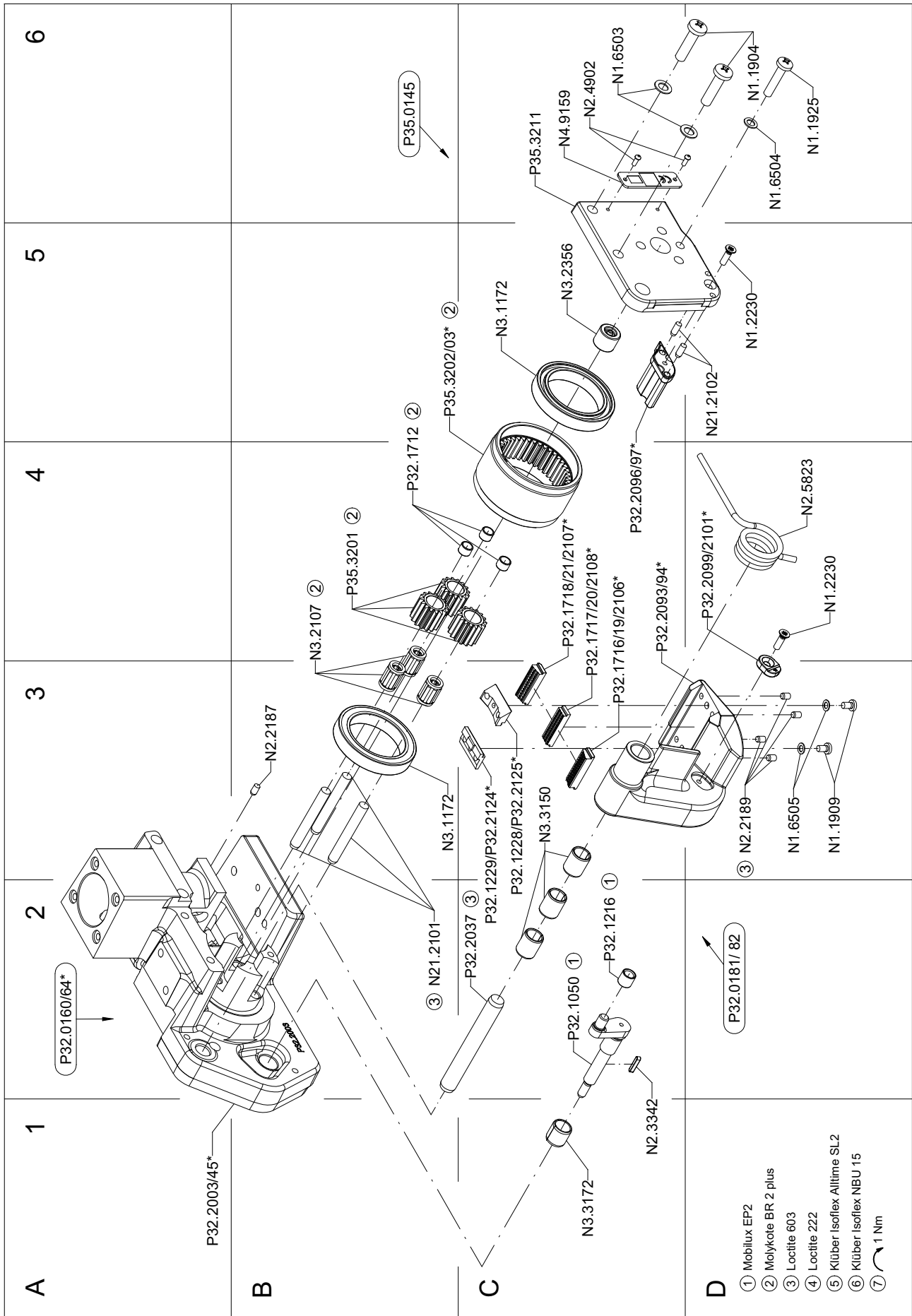
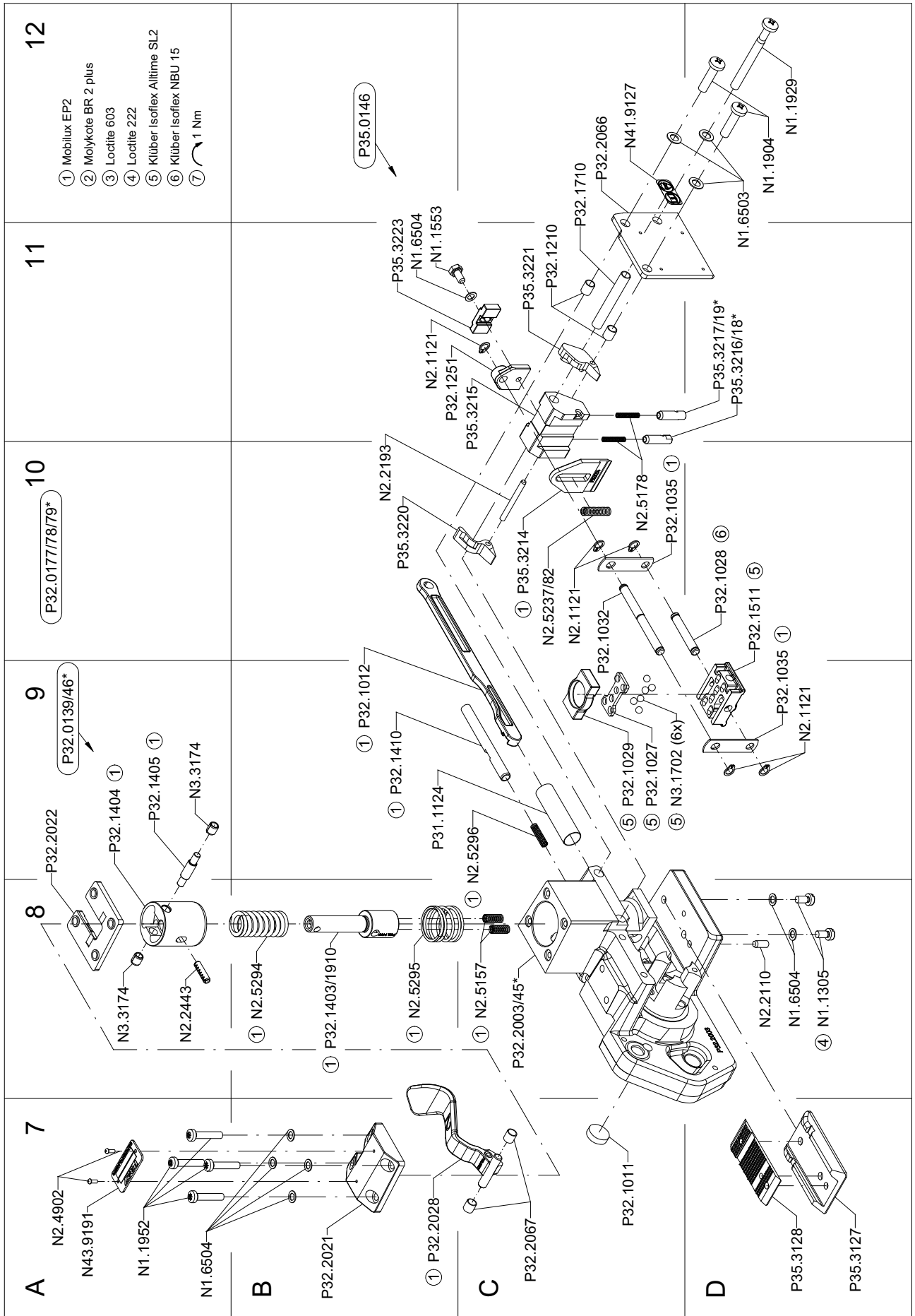


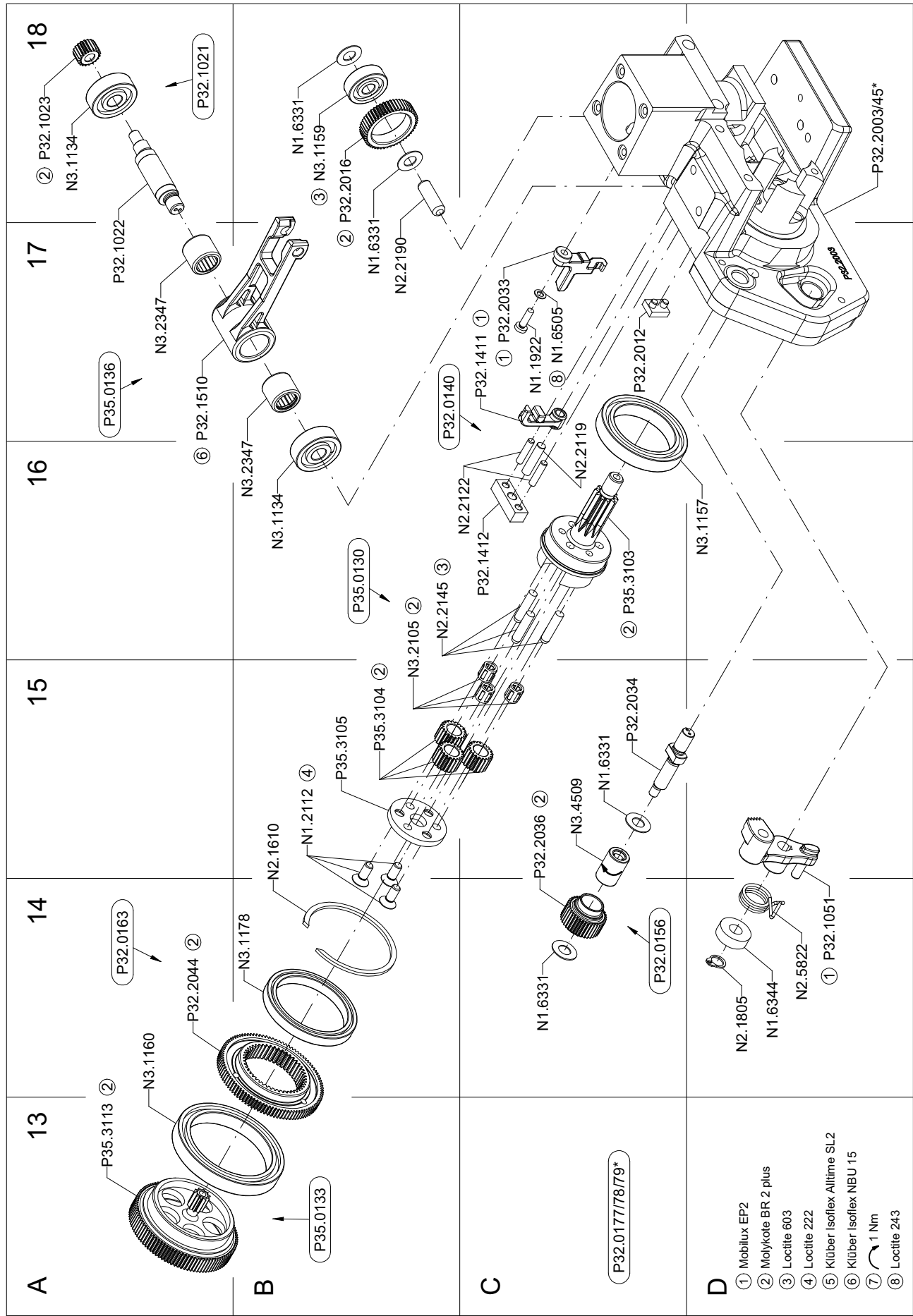
6 DRAWINGS P327.0001.01

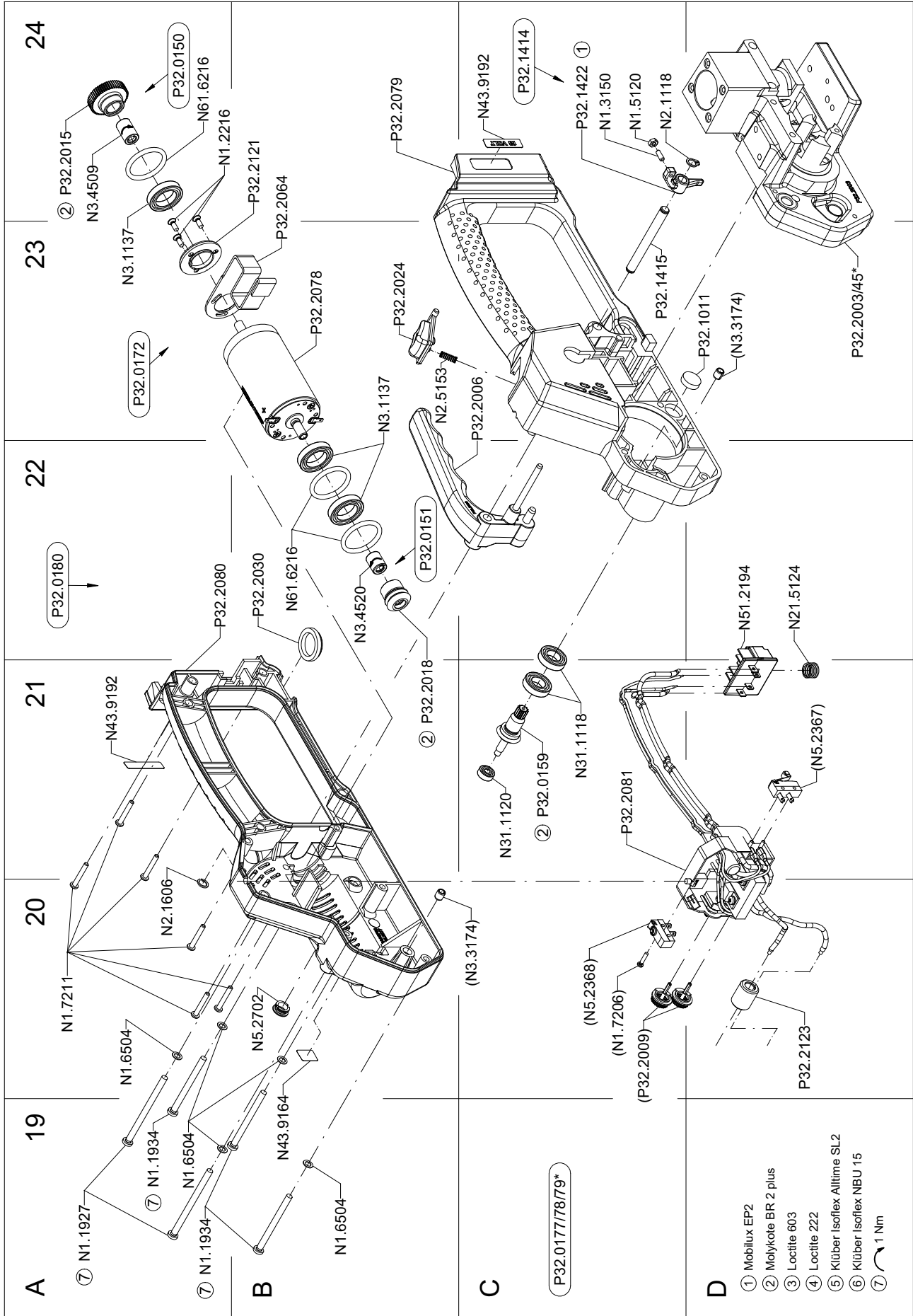


*See 5.8 Ordering spare parts



*See 5.8 Ordering spare parts





7 SPARE PARTS LIST P327

7.1 Type independent spare parts P327.0001.01

Item-No.		in group	Pcs.	Description	Dimension	Field
N1.1305		P32.0178	2	SCREW	M4 X 7.8	D8
N1.1553		P35.0146	1	HEXAGON SCREW	M4 X 8	B11
N1.1904			4	SCREW	M5 X 20	D6+
N1.1909			2	FLAT HEAD SCREW	M3 X 5	D3
N1.1922		P32.0178	1	SCREW	M3 X 10	C17
N1.1925			1	SCREW	M4 X 20	D6
N1.1927		P32.0178	2	FLAT HEAD SCREW	M4 X 60	A19
N1.1929			1	SCREW	M5 X 50	D12
N1.1934		P32.0178	3	FLAT HEAD SCREW	M4 X 50	A19
N1.1952		P32.0178	4	FLAT HEAD SCREW	M4 X 20	A7
N1.2112		P35.0130	3	COUNTERSUNK SCREW	M4 X 10	B15
N1.2216		P32.0172	3	COUNTERSUNK SCREW	M3 X 8	A24
N1.2230			2	COUNTERSUNK SCREW	M3 X 10	D4+
N1.3150		P32.1414	1	SOCKET SET SCREW	M3 X 8	C24
N1.5120		P32.1414	1	HEXAGON NUT	M3	C24
N1.6331		P32.0178	4	SPACER WASHER	6 X 12 X 0.5	C14+
N1.6344		P32.0178	1	SPACER PIECE	6.3 X 15 X 5	D14
N1.6503			5	SAFETY WASHER	M5	C6+
N1.6504			1	SAFETY WASHER	M4	D6
N1.6504		P32.0178	11	SAFETY WASHER	M4	A7+
N1.6504		P35.0146	1	SAFETY WASHER	M4	B11
N1.6505			2	SAFETY WASHER	M3	D3
N1.6505		P32.0178	1	SAFETY WASHER	M3	C17
N1.7206		P32.2081	1	PT-SCREW	2.2 X 10	C20
N1.7211		P32.0180	6	PT-SCREW	3 X 20	A20
N21.2101		P32.0160	3	PARALLEL PIN	5 h6 X 40	B2
N21.2102		P35.0145	2	PARALLEL PIN	3 m6 X 8	D5
N21.5124		P32.0180	1	PRESSURE SPRING	0.9 X 10 X 15/5.5	D22
N2.1118		P32.0180	1	SECURITY RING	6	C24
N2.1121			1	SECURITY RING	5	B11
N2.1121		P32.0178	4	SECURITY RING	5	D9+
N2.1606		P32.0180	1	SPRING RING	SW6	A20
N2.1610		P32.0178	1	SPRING RING	SB44	B15
N2.1805		P32.0178	1	TENSIONING RING	6	D14
N2.2110		P32.0160	1	PARALLEL PIN	4 m6 X 10	D10
N2.2119		P32.0140	1	PARALLEL PIN	4 m6 X 18	C16
N2.2122		P32.0140	2	PARALLEL PIN	3 h6 X 14	C16
N2.2145		P35.0130	3	PARALLEL PIN	4 h6 X 18	B16
N2.2187		P32.0160	1	PARALLEL PIN	3 m6 X 6	B3
N2.2189		P32.0181	4	PARALLEL PIN	3 m6 X 5	D3
N2.2190		P32.0178	1	PARALLEL PIN	6 h6 X 18	B17
N2.2193			1	PARALLEL PIN	3 m6 X 32	B10
N2.2443		P32.0139	1	DOWEL PIN	4 X 15	A8
N2.3342		P32.0178	1	FEATHER KEY	2 X 2 X 10	C1
N2.4902			4	HAMMER HEAD BOLT	1.85 X 4.76	C6+
N2.5153		P32.0180	1	PRESSURE SPRING	0.4 X 4.1 X 16/10.5	B23
N2.5157		P32.0178	2	PRESSURE SPRING	0.6 X 4.8 X 20/15.5	C8
N2.5178			2	PRESSURE SPRING	0.32 X 2.82 X 20.5/ 20.5	C10
N2.5294		P32.0139	1	PRESSURE SPRING	2.5 X 15 X 46.5/9.5	B8

[] = Group

* = Wearing parts

Item-No.		in group	Pcs.	Description	Dimension	Field
N2.5295		P32.0178	1	PRESSURE SPRING	1.5 X 21 X 27/5.5	B8
N2.5296		P32.0178	1	PRESSURE SPRING	0.5 X 4 X 24/16.5	C9
N2.5822		P32.0178	1	TORSION SPRING	1.25 X 12/3.75	D14
N2.5823			1	TORSION SPRING	2.8 X 17/4	D4
N31.1118		P32.0180	2	BALL BEARING	10 X 19 X 5	C21
N31.1120		P32.0180	1	BALL BEARING	4 X 11 X 4	C21
N3.1134		P32.0178	1	BALL BEARING	7 X 22 X 7	B16
N3.1134		P32.1021	1	BALL BEARING	7 X 22 X 7	A18
N3.1137		P32.0150	1	BALL BEARING	15 X 24 X 5	A23
N3.1137		P32.0180	2	BALL BEARING	15 X 24 X 5	B23
N3.1157		P35.0130	1	BALL BEARING	30 X 42 X 7	D16
N3.1159		P32.0178	1	BALL BEARING	6 X 19 X 6	B18
N3.1160		P35.0133	1	BALL BEARING	40 X 52 X 7	A14
N3.1172			2	BALL BEARING	30 X 42 X 7	B3+
N3.1178		P32.0163	1	BALL BEARING	35 X 44 X 5	B14
N3.1702		P32.0178	6	BALL	4 MM	C9
N3.2105		P35.0130	3	NEEDLE CAGE	K 4 X 7 X 7 TN	B16
N3.2107			3	NEEDLE CAGE	K 5 X 9 X 13 TN	B4
N3.2347		P35.0136	2	NEEDLE BUSH	10 X 14 X 12	B16+
N3.2356		P35.0145	1	NEEDLE CASE	7 X 11 X 9	C5
N3.3150		P32.0181	3	SLIDE-BEARING	8 X 10 X 12	C3
N3.3172		P32.0160	1	SLIDE-BEARING	8 X 10 X 10	C1
N3.3174		P32.0139	2	SLIDE-BEARING	4 X 5.5 X 6	A8+
N3.3174		P32.2079	1	SLIDE-BEARING	4 X 5.5 X 6	D23
N3.3174		P32.2080	1	SLIDE-BEARING	4 X 5.5 X 6	C20
N3.4509		P32.0150	1	NEEDLE FREE WHEELING	6 X 10 X 15	A24
N3.4509		P32.0156	1	NEEDLE FREE WHEELING	6 X 10 X 15	C15
N3.4520		P32.0151	1	FREE-WHEELING	6 X 10 X 12	B22
N41.9127			1	ADHESIVE LABEL	20 X 10 X 0.1	C12
N43.9164			1	ADHESIVE LABEL	WEEE	B19
N43.9191			1	TYPE PLATE	<<P327>>	A7
N43.9192		P32.0180	2	ADHESIVE LABEL	18 Volt	A21+
N4.9159			1	LABEL	<<CE>>	C6
N51.2194		P32.0180	1	INSERTATION PART		D22
N5.2367		P32.2081	1	MICRO SWITCH		D21
N5.2368		P32.2081	1	MICRO SWITCH		C20
N5.2702			1	COVER		B20
N61.6216		P32.0180	3	O-RING	23.5 X 3	B22+
P31.1124		P32.0160	1	TUBE		B9
[P32.0140]		P32.0178	1	INSERTATION PART		B17
[P32.0150]		P32.0180	1	GEAR WHEEL		A24
[P32.0151]		P32.0180	1	CONICAL GEAR WHEEL		B22
[P32.0156]		P32.0178	1	GEAR WHEEL		C14
[P32.0159]		P32.0180	1	PINION		C21
[P32.0163]		P32.0178	1	WHEEL		A14
[P32.0172]		P32.0180	1	MOTOR		A23
[P32.0180]		P32.0178	1	DRIVE		A22
P32.1011		P32.0178	1	FELT		C7
P32.1011		P32.0180	1	FELT		D23
P32.1012		P32.0178	1	COUPLER		B9
[P32.1021]		P32.0178	1	WELDING EXCENTRIC		A18
P32.1022		P32.1021	1	WELDING EXCENTRIC		A17
P32.1023		P32.1021	1	PINION		A18
P32.1027		P32.0178	1	BALL CAGE		C9

[] = Group

* = Wearing parts

Item-No.		in group	Pcs.	Description	Dimension	Field
P32.1028		P32.0178	1	BOLT		D10
P32.1029		P32.0178	1	THRUST PIECE		C9
P32.1032		P32.0178	1	DRIVING PIN		C10
P32.1035		P32.0178	2	DRIVER		D9+
P32.1050		P32.0178	1	FRONT TOGGLE LINK		C2
P32.1051		P32.0178	1	LEVER		D14
P32.1210			2	CENTERING SLEEVE		C11
P32.1216			1	PRESSURE ROLLER		C2
P32.1251		P35.0146	1	COUPLER		B11
P32.1404		P32.0139	1	SPRING SLIDE		A9
P32.1405		P32.0139	1	ROLLER		A9
P32.1410		P32.0178	1	COUPLER		B9
P32.1411		P32.0178	1	LEVER		C17
P32.1412		P32.0140	1	INSERTATION PART		C16
[P32.1414]		P32.0180	1	LEVER		C24
P32.1415		P32.0180	1	HANDLE SHAFT		C23
P32.1422		P32.1414	1	LEVER		C24
P32.1510		P35.0136	1	ROCKER		A17
P32.1511	*	P32.0178	1	WELDING GRIPPER		D10
P32.1710			1	CENTERING SLEEVE		C12
P32.1712			3	DOWEL		B4
[P32.2006]		P32.0180	1	HANDLE LEVER		C23
P32.2009		P32.2081	2	TURNING BUTTON		C20
P32.2012		P32.0178	1	GUIDE		C17
P32.2015		P32.0150	1	GEAR WHEEL		A24
P32.2016		P32.0178	1	GEAR WHEEL		B18
P32.2018		P32.0151	1	CONICAL GEAR WHEEL		B21
P32.2021		P32.0178	1	COVER		B7
P32.2022		P32.0178	1	FIXING PLATE		A9
P32.2024		P32.0180	1	PRESSURE BUTTON		B23
[P32.2028]		P32.0178	1	LEVER		B7
P32.2030		P32.0180	1	DISK		B22
P32.2033		P32.0178	1	HOOK		C17
P32.2034		P32.0178	1	SHAFT		C15
P32.2036		P32.0156	1	GEAR WHEEL		C15
P32.2037		P32.0160	1	SWIVEL SHAFT		C2
P32.2044		P32.0163	1	WHEEL		A14
P32.2064		P32.0172	1	COOLING PLATE		B24
P32.2066			1	COVER		C12
P32.2067		P32.0178	2	CENTERING SLEEVE		B7
[P32.2078]	*	P32.0172	1	ELECTRIC MOTOR		B23
[P32.2079]		P32.0180	1	MOTOR HOUSING		B24
[P32.2080]		P32.0180	1	MOTOR HOUSING		A22
[P32.2081]		P32.0180	1	CIRCUIT BOARD		C21
P32.2121		P32.0172	1	DISK		B24
[P32.2123]		P32.0180	1	DOWEL		D20
[P35.0130]		P32.0178	1	IDLER STEP		B16
[P35.0133]		P32.0178	1	GEAR WHEEL		B13
[P35.0136]		P32.0178	1	ROCKER		A17
[P35.0145]			1	END COVER		B6
[P35.0146]			1	COUPLER		B12
P35.3103		P35.0130	1	PLANET SHAFT		C16
P35.3104		P35.0130	3	IDLER GEAR		B15
P35.3105		P35.0130	1	COVER		B15

[] = Group

* = Wearing parts

Item-No.		in group	Pcs.	Description	Dimension	Field
P35.3113		P35.0133	1	GEAR WHEEL		A13
P35.3127		P32.0178	1	STEEL INSERT		D7
P35.3128	*	P32.0178	1	WELDING STOP GRIPPER		D7
P35.3201			3	IDLER GEAR		B4
P35.3211		P35.0145	1	LAGERSCHILD		C6
P35.3214	*		1	CUTTER		C10
P35.3215			1	GUIDE CASE		C11
P35.3220			1	SEESAW LEVER		B10
P35.3221			1	SEESAW LEVER		C11
P35.3223		P35.0146	1	THRUST PIECE		B11

7.2 Type dependent spare parts P327.0001.001

43.2321.01	P327/16/0.65-1.05		P327.0001.01			01.07.09
Item-No.		in group	Pcs.	Description	Dimension	Field
N2.5237			1	PRESSURE SPRING	0.8 X 4.8 X 25/18.5	C10
[P32.0139]		P32.0178	1	SPRING PACKAGE		A9
[P32.0160]		P32.0178	1	BODY		A2
[P32.0178]			1	BASE MODEL		A10+
[P32.0181]			1	TENSIONING BODY		D2
P32.1228			1	HOLDER		C3
P32.1229			1	HOLDER		C3
P32.1403		P32.0139	1	SPRING BOLT		B8
P32.1719	*		1	GRIPPER		C4
P32.1720	*		1	GRIPPER		C4
P32.1721	*		1	GRIPPER		C4
P32.2003		P32.0160	1	BODY		A1+
P32.2093		P32.0181	1	TENSIONING BODY		C4
P32.2096			1	STRAP GUIDE		C4
P32.2099			1	STRAP STOP		D4
P35.3203	*		1	TENSIONING WHEEL		B5
P35.3216			1	GUIDE PIN		D11
P35.3217			1	GUIDE PIN		D11

43.2322.01	P327/16/1.06-1.35		P327.0001.01			22.02.10
Item-No.		in group	Pcs.	Description	Dimension	Field
N2.5282			1	PRESSURE SPRING	0.8 X 4.8 X 27/17.5	C10
[P32.0146]		P32.0179	1	SPRING PACKAGE		A9
[P32.0160]		P32.0179	1	BODY		A2
[P32.0179]			1	BASE MODEL		A10+
[P32.0182]			1	TENSIONING BODY		D2
P32.1910		P32.0146	1	SPRING BOLT		B8
P32.2003		P32.0160	1	BODY		A1+
P32.2094		P32.0182	1	TENSIONING BODY		C4
P32.2096			1	STRAP GUIDE		C4
P32.2099			1	STRAP STOP		D4
P32.2106	*		1	GRIPPER		C4
P32.2107	*		1	GRIPPER		C4
P32.2108	*		1	GRIPPER		C4
P32.2124			1	HOLDER		C3
P32.2125			1	HOLDER		C3
P35.3203	*		1	TENSIONING WHEEL		B5
P35.3216			1	GUIDE PIN		D11
P35.3217			1	GUIDE PIN		D11

[] = Group

* = Wearing parts

43.2331.01	P327/19/0.40-0.64			P327.0001.01		01.07.09
Item-No.		in group	Pcs.	Description	Dimension	Field
N2.5237			1	PRESSURE SPRING	0.8 X 4.8 X 25/18.5	C10
[P32.0139]		P32.0177	1	SPRING PACKAGE		A9
[P32.0164]		P32.0177	1	BODY		A2
[P32.0177]			1	BASE MODEL		A10+
[P32.0181]			1	TENSIONING BODY		D2
P32.1228			1	HOLDER		C3
P32.1229			1	HOLDER		C3
P32.1403		P32.0139	1	SPRING BOLT		B8
P32.1716	*		1	GRIPPER		C4
P32.1717	*		1	GRIPPER		C4
P32.1718	*		1	GRIPPER		C4
P32.2045		P32.0164	1	BODY		A1+
P32.2093		P32.0181	1	TENSIONING BODY		C4
P32.2097			1	STRAP GUIDE		C4
P32.2101			1	STRAP STOP		D4
P35.3202	*		1	TENSIONING WHEEL		B5
P35.3218			1	GUIDE PIN		D11
P35.3219			1	GUIDE PIN		D11

43.2332.01	P327/19/0.65-1.05			P327.0001.01		01.07.09
Item-No.		in group	Pcs.	Description	Dimension	Field
N2.5237			1	PRESSURE SPRING	0.8 X 4.8 X 25/18.5	C10
[P32.0139]		P32.0178	1	SPRING PACKAGE		A9
[P32.0160]		P32.0178	1	BODY		A2
[P32.0178]			1	BASE MODEL		A10+
[P32.0181]			1	TENSIONING BODY		D2
P32.1228			1	HOLDER		C3
P32.1229			1	HOLDER		C3
P32.1403		P32.0139	1	SPRING BOLT		B8
P32.1719	*		1	GRIPPER		C4
P32.1720	*		1	GRIPPER		C4
P32.1721	*		1	GRIPPER		C4
P32.2003		P32.0160	1	BODY		A1+
P32.2093		P32.0181	1	TENSIONING BODY		C4
P32.2097			1	STRAP GUIDE		C4
P32.2101			1	STRAP STOP		D4
P35.3203	*		1	TENSIONING WHEEL		B5
P35.3218			1	GUIDE PIN		D11
P35.3219			1	GUIDE PIN		D11

[] = Group

* = Wearing parts

43.2333.01	P327/19/1.06-1.35		P327.0001.01			22.02.10
Item-No.		in group	Pcs.	Description	Dimension	Field
N2.5282			1	PRESSURE SPRING	0.8 X 4.8 X 27/17.5	C10
[P32.0146]		P32.0179	1	SPRING PACKAGE		A9
[P32.0160]		P32.0179	1	BODY		A2
[P32.0179]			1	BASE MODEL		A10+
[P32.0182]			1	TENSIONING BODY		D2
P32.1910		P32.0146	1	SPRING BOLT		B8
P32.2003		P32.0160	1	BODY		A1+
P32.2094		P32.0182	1	TENSIONING BODY		C4
P32.2097			1	STRAP GUIDE		C4
P32.2101			1	STRAP STOP		D4
P32.2106	*		1	GRIPPER		C4
P32.2107	*		1	GRIPPER		C4
P32.2108	*		1	GRIPPER		C4
P32.2124			1	HOLDER		C3
P32.2125			1	HOLDER		C3
P35.3203	*		1	TENSIONING WHEEL		B5
P35.3218			1	GUIDE PIN		D11
P35.3219			1	GUIDE PIN		D11

[] = Group

* = Wearing parts