

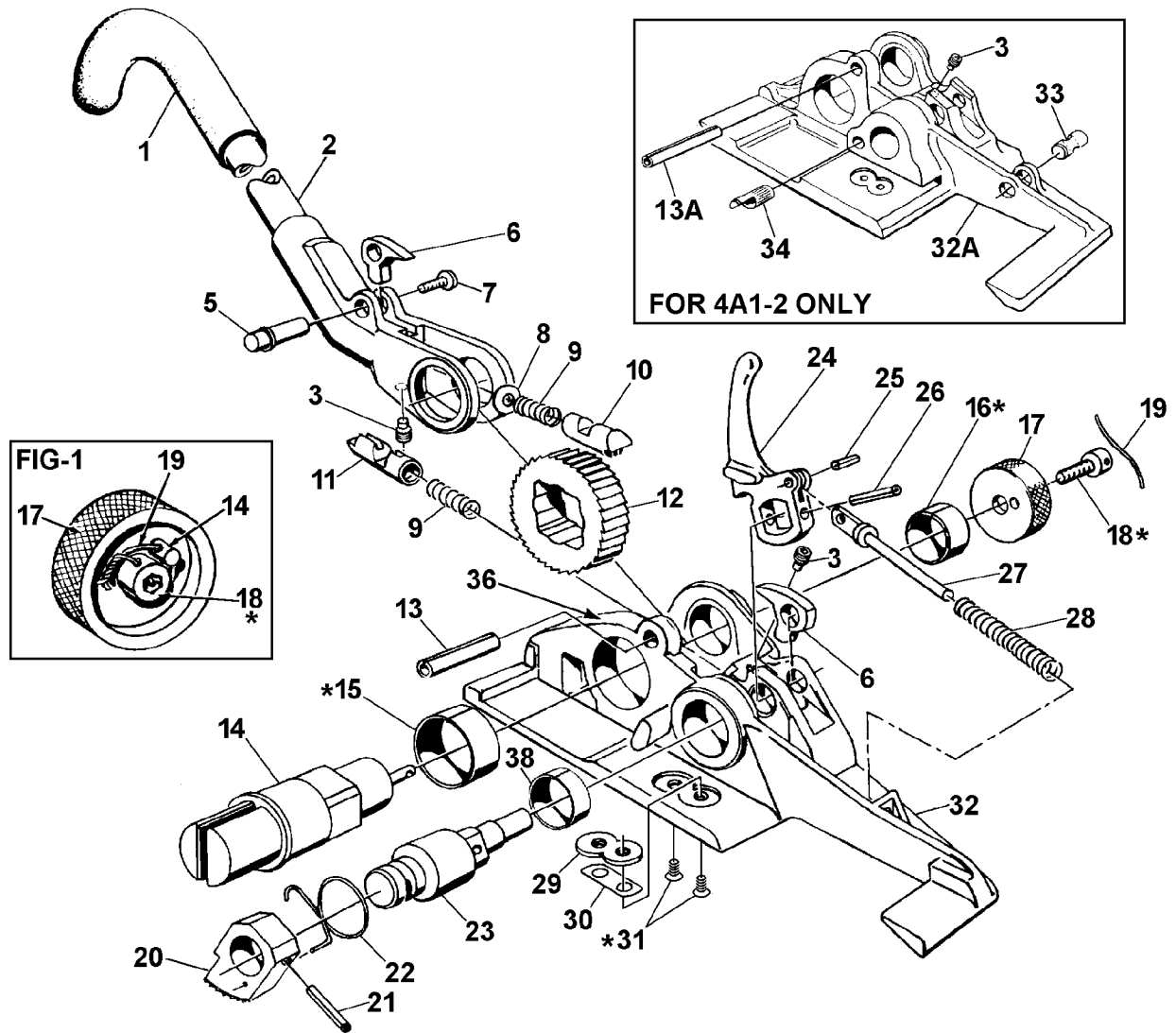
## PARTS LIST

<u>KEY</u>	<u>QTY.</u>	<u>4A1-114 PART NO.</u>	<u>4A1-114KR PART NO.</u>	<u>4A1-2 PART NO.</u>	<u>DESCRIPTION</u>
1	1	171652	171652	171652	Handle grip
2	1	171955	171955	179023	Yoke handle assembly
3	2	173956	173956	173956	Set screw, Nylock
5	1	006768	--	006768	Pawl pin
5A	1	--	005568	--	Pawl pin
6	2	006767	006767	006767	Pawl cam
7	1	086190	086190	086190	Klipring, Truarc #5304-77
8	1	006746	006746	006746	Pawl spring washer, 1/4 SAE Std.
9	2	006769	006769	006769	Pawl spring
10	1	<u>006711</u>	<u>006711</u>	<u>006711</u>	<u>Handle pawl</u>
11	1	<u>006712</u>	<u>006712</u>	<u>006712</u>	<u>Base pawl</u>
12	1	<u>006762</u>	<u>006762</u>	<u>006762</u>	<u>Ratchet wheel</u>
13	1	006920	006920	--	Roll pin, 3/8 x 1 5/8
13A	1	--	--	071804	Roll pin, 3/8 x 2 1/4
14	1	005908	005908	005909	Windlass shaft assembly
15	1	008675	008675	008675	Bushing
16	1	008682	008682	008682	Bushing
17	1	006705	006705	006705	Windlass knob
18	1	006748	006748	006748	Cap screw, 5/16-18 x 3/4
19	1	007184	007184	007184	Retaining wire
20	1	<u>006758</u>	<u>006758</u>	<u>006758</u>	<u>Gripper</u>
21	1	006787	006787	006787	Roll pin, 3/16 x 1
22	1	<u>006788</u>	<u>006788</u>	<u>006788</u>	<u>Gripper spring</u>
23	1	005907	005907	005912	Gripper shaft
24	1	006765	--	006765	Gripper release cam
24A	1	--	005565	--	Gripper release cam
25	1	006738	006738	006738	Roll pin, 5/32 x 3/8
26	1	006737	006737	006737	Cam retaining pin (roll pin), 5/32 x 1
27	1	<u>006739</u>	<u>006739</u>	<u>006739</u>	<u>Cam push rod</u>
28	1	<u>006741</u>	<u>006741</u>	<u>006741</u>	<u>Cam push rod spring</u>
29	1	<u>006742</u>	<u>006742</u>	<u>006742</u>	<u>Gripper plate</u>
30	A/R	005913	005913	005913	Shim
31	2	<u>004860</u>	<u>004860</u>	<u>006789</u>	<u>Gripper plate screw</u>
32	1	163321	--	--	Base
32A	1	--	--	163333	Base
32B	1	--	163327	--	Base, not shown
33	1	--	--	006740	Push rod swivel
34	1	--	--	006698	Gripper stop pin
35	1	177896	177896	177896	Warning sign
36	1	002481	002481	002481	Nameplate
37	2	002163	002163	004939	Drive screw
38	1	424193	424193	424193	DU Bearing (14DU12)

! When ordering parts, please show tool model, part number and name.

! All recommended spare parts are underlined and should be stocked.

! Standard hardware parts may be obtained from local hardware suppliers.



\* Use Loctite #242.

**NOTES:**

1. Thread wire (19) through hole in screw (18) and through hole in pin (14). Twist wire ends until snug (See Figure 1 above).
2. Assemble Key Nos. 13, 15 and 16 with slot facing up.
3. Do not apply sealant to small screws or to moving parts as liquid spreads easily.
4. Clean tool at least once a week and apply light machine oil to all moving parts daily.

**⚠ WARNING**

Inspect all parts daily and replace them if they are worn or broken. Failure to do this can affect a product's operation and could result in serious personal injury.