



PRODUCT RESOURCE GUIDE

2019

MIP Midwest
Industrial
Packaging



The Midwest Industrial Packaging Advantage

At Midwest Industrial Packaging, we focus on providing a solid, affordable product without compromising our high quality standards of performance.



What sets Midwest Industrial Packaging apart?

Customer Results with a Worldwide Reach

MIP is a global company. Our tools are built by the best strapping tool manufacturer in the world. We build our products internationally and ship them to over 90 countries and it's all driven from the USA heartland. We are proud to offer our quality products through some of the finest stocking distributors and original equipment manufacturers.

Our Committed Team is Results Driven

Midwest Industrial Packaging supports you with an experienced team of engineering, production, shipping and customer care experts with one single focus: a strapping solution that meets or exceeds the value you demand. And, we are here to back up your supplier 100%.

We make MIP Tools, Seal Securement and Dispensers to support your application. Spare Parts and Service for all of our products are distributed globally through Signode Parts and Service Group.



MIP Classic Products

- Manual Tensioners
- Manual Sealers
- Manual Combination Tools
- Manual Cutters
- Dispensers for Steel, Plastic and Polycord
- Seals, Buckles and Edge Protection

4900 SERIES • STEEL

Combination Tool Sealless Strap Joint



Model (Part Number)	Strap Size				Strap Type	Joint Type	Weight	
	Width		Thickness				lbs	kg
	inch	mm	inch	mm				
MIP-4900-12	1/2	12.7	0.015-0.025	0.43-0.63	Regular & High Tens	3 Key Locking	8.4	3.8
MIP-4900-58	5/8	16						
MIP-4900-34	3/4	19						

- Interlocking feature eliminates seals
- Ideal for Flat applications



MIP

THE MIDWEST INDUSTRIAL PACKAGING ADVANTAGE

As one of the nation's leading American tool manufacturers, our company started over 25 years ago, and Midwest Industrial Packaging continues to grow supporting our Global Mission with a new distribution warehouse and engineering technical center located in Glenview, IL.

We offer a proven value-quality brand: producing, stocking and distributing a wide range of tool supply solutions for an effective competitive edge.

We are proud to offer our MIP product line to meet the demands of the worldwide industrial marketplace.



Phone

800-800-5104



Fax

800-797-8727



Mail

3700 W. Lake Ave.
Glenview, IL 60026

info@miptools.com
customerservice@miptools.com



Web

miptools.com



Parts & Repair

800-228-4744

TENSIONERS • STEEL

Feedwheel Design Flat Load Applications



Model (Part Number)	Strap Size				Strap Type	Tool Type	Weight	
	Width		Thickness				lbs	kg
	inch	mm	inch	mm				
MIP-1200	3/8 to 3/4	9.5 to 19.0	0.015-0.023	0.43-0.58	Regular & High Tens	Light Tension	4	1.8
MIP-1300			0.015-0.025	0.43-0.64		Medium Tension	5	2.3
MIP-1400	3/4 to 1-1/4	19.0 to 32.0	0.025-0.031	0.64-0.79		High Tension	8	3.2



MIP-1200
6" Handle



MIP-1300
8" Handle



MIP-1400
12" Handle

MIP

TENSIONERS • STEEL

Feedwheel Design Round Load Applications



Model (Part Number)	Strap Size				Strap Type	Tool Type	Weight	
	Width		Thickness				lbs	kg
	inch	mm	inch	mm				
MIP-1610	3/8 to 3/4	9.5 to 19.0	0.015-0.025	0.38-0.64	Regular & High Tens	Medium Tension	4	1.8
MIP-1620	5/8 to 1-1/4	16.0 to 32.0	0.023-0.031	0.58-0.79		High Tension	8	3.2

For use with Push-On
application seals only



MIP-1610
6.25" Handle



MIP-1620
8" Handle

MIP

TENSIONERS • STEEL

Windlass Design Flat Load Applications



Model (Part Number)	Strap Size				Strap Type	Tool Type	Weight	
	Width		Thickness				lbs	kg
	inch	mm	inch	mm				
MIP-1900	3/8 to 3/4	9.5 to 19.0	0.015-0.031	0.30-0.76	Regular & High Tens	Medium Tension	4	1.8



MIP-1900
7.25" Handle

MIP

TENSIONERS • STEEL

Push Design Flat Load Applications



Model (Part Number)	Strap Size				Strap Type	Tool Type	Weight	
	Width		Thickness				lbs	kg
	inch	mm	inch	mm				
MIP-1800	3/8 to 3/4	9.5 to 19.0	0.015-0.023	0.38-0.58	Regular & High Tens	Medium Tension	4	1.8
MIP-1860	5/8 to 1-1/4	16.0 to 32.0	0.023-0.031	0.58-0.78		High Tension	7	3.2



MIP-1800
3" Handle



MIP-1860
7.25" Handle

MIP

SEALERS • STEEL

Notch Design Single & Double



Model (Part Number)	Strap Size				Sealer Type	Seal Type	Seal Number	Tool Type	Weight				
	Width		Thickness						lbs	kg			
	inch	mm	inch	mm									
MIP-1100-12	1/2	12.7	0.015-0.023	0.38-0.58	Double Notch	Snap On	S12S02	Regular Duty	3	1.4			
MIP-1100-58	5/8	16					S58S02						
MIP-1100-34	3/4	19					S34S02						
MIP-1120-12	1/2	12.7			Single Notch	Push Type	S12P02						
MIP-1120-58	5/8	16					S58P02						
MIP-1120-34	3/4	19					S34P02						
MIP-1152-12	1/2	12.7	0.025-0.031	0.64-0.79	Double Notch	Snap On	S12S02	Heavy Duty	5	1.8			
MIP-1152-58	5/8	16					S58S02						
MIP-1152-34	3/4	19					S34S02						
MIP-3000-34	3/4	19			Single Notch	Push Type	S34P03				Heavy Duty	11.0	5.0
MIP-3000-114	1-1/4	32					S114P03						
MIP-3100-34	3/4	19					Double Notch						
MIP-3100-114	1-1/4	32	S114S03										

MIP-1100
14" Handle

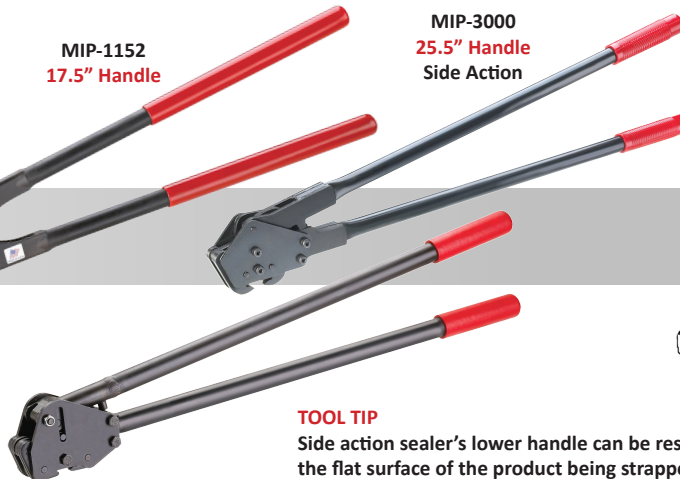


MIP-1152
17.5" Handle

MIP-3000
25.5" Handle
Side Action



MIP-1120
14" Handle

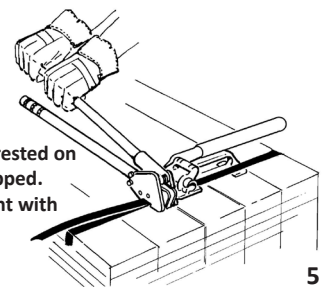


MIP-3100
25.5" Handle
Side Action

MIP

TOOL TIP

Side action sealer's lower handle can be rested on the flat surface of the product being strapped. Operator's can apply much of their weight with both hands on the upper handle.



TENSIONERS • PLASTIC

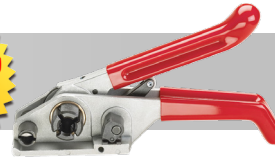
Windlass Design Flat Load Applications



Model (Part Number)	Strap Size				Strap Type	Tool Type	Weight	
	Width		Thickness				lbs	kg
	inch	mm	inch	mm				
MIP-370	1/2 to 3/4	12.7 to 19.0	0.020-0.031	0.50-0.79	PET, PP, Polycord	Medium Tension	3	1.4
MIP-380			0.020-0.040	0.50-1.00		High Tension	5	2.3



MIP-370
6.5" Handle



MIP-380
6.5" Handle

MIP

SEALERS • PLASTIC

Crimp Design Standard Duty



Model (Part Number)	Strap Size				Sealer Type	Seal Type	Tool Type	Weight				
	Width		Thickness					lbs	kg			
	inch	mm	inch	mm								
MIP-100-12	1/2	12.7	0.015-0.023	0.38-0.58	Standard Crimp	P12S02	Economy	4	1.8			
MIP-100-58	5/8	16				P58S02						
MIP-120-12	1/2	12.7	0.015-0.031	0.38-0.78		P12S02	Standard					
MIP-120-58	5/8	16				P58S02						
MIP-400-12	1/2	12.7	0.015-0.040	0.38-1.00		P12S02	Heavy Duty			6	2.7	
MIP-400-58	5/8	16				P58S02						
MIP-400-34	3/4	19			Special Order							
MIP-420-12	1/2	12.7	0.028-0.040	0.70-1.00	P12S03	Serrated Crimp		Heavy Duty	6			2.7
MIP-420-58	5/8	16			P58S03							
MIP-430-12	1/2	12.7	0.028-0.050	0.70-1.27	P12S03							
MIP-430-58	5/8	16			P58S03							
MIP-430-34	3/4	19			P34S03							



MIP-100
14" Handle

MIP-120
14" Handle

MIP-400
17" Handle

MIP-420
17" Handle

MIP-430
17" Handle

MIP

STRAP CUTTERS

Steel & Plastic Strapping



Model (Part Number)	Strap Size				Strap Type	Tool Type	Weight	
	Width		Thickness				lbs	kg
	inch	mm	inch	mm				
MIP-2100	3/8 to 3/4	9.0 to 19.0	0.015-0.031	0.38-0.79	Any	Economy	3	1.4
MIP-2300	3/4 to 2	19.0 to 50.0	0.015-0.050	0.38-1.30		Heavy Duty	8	3.6



MIP-2100
8.5" Handle



MIP-2300
17.5" Handle



MIP

STRAP DISPENSERS

Plastic & Steel



Model (Part Number)	Strap Size				Strap Type	Dispenser Type	Weight	
	Core Inner Diameter		Strap/Face Width				lbs	kg
	inch	mm	inch	mm				
MIP-5200	16	406	3 ↔ 6	76 ↔ 152	Plastic or Steel Oscillated	Regular Duty	58	26.3
MIP-6100							52	23.6
MIP-6250			3/4 ↔ 1-1/4	19 ↔ 32	Steel Ribbon	Heavy Duty	64	29
MIP-6550							64	29



MIP-5200
10" Wheels



MIP-6100
8" Wheels



MIP-6250
10" Wheels



MIP-6550
8" Wheels

MIP

STRAP DISPENSERS

Economy Solutions



Model (Part Number)	Strap Size				Strap Type	Dispenser Type	Weight	
	Core Inner Diameter		Strap/Face Width				lbs	kg
	inch	mm	inch	mm				
MIP-5000	8	203	8	203	Plastic	Light Duty	33	15
MIP-5040	16	406	3 ↔ 6	76 ↔ 152	Plastic or Steel		40	18.1
MIP-5100	8 & 16	203 & 406	3 ↔ 8	76 ↔ 203			48	21.8
MIP-8000	3	72	3 ↔ 6	76 ↔ 152	Poly-Cord		31	14.1



MIP-5000
6" Wheels



MIP-5040
6" Wheels



MIP-5100
7" Wheels



MIP-8000
6" Wheels

MIP

STRAP DISPENSERS

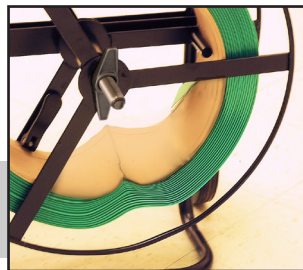
EZ Load • Open Cage



Model (Part Number)	Strap Size				Strap Type	Dispenser Type	Weight	
	Core Inner Diameter		Strap/Face Width				lbs	kg
	inch	mm	inch	mm				
MIP-9000	16	406	6	152	Plastic	Regular Duty	58	21.8



MIP-9000
8" Wheels



START SAVING MONEY !
The MIP exclusive core adjustment feature allows you to run damaged strap cores.

MIP

STRAP DISPENSERS

Floor Horizontal



Model (Part Number)	Strap Size				Strap Type	Dispenser Type	Weight	
	Core Inner Diameter		Strap/Face Width				lbs	kg
	inch	mm	inch	mm				
MIP-8300	16	406	3/8 to 3/4	9.5 to 19.0	Steel Mill Wound	Floor	41	18.6
MIP-8350	16	406	3/4 or 1-1/4	19.0 or 32.0	Steel Ribbon Wound		161	73



MIP-8300



MIP-8350

MIP

STRAP DISPENSERS

Special Application



Model (Part Number)	Strap Size				Strap Type	Dispenser Type	Weight	
	Core Inner Diameter		Strap/Face Width				lbs	kg
	inch	mm	inch	mm				
MIP-6850	16	406	3/4, 1-1/4, 2	19, 32, 50	Steel	Multi-Coil	71	32.2

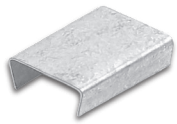
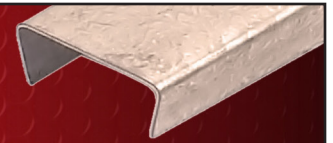


MIP-6850
10" Wheels

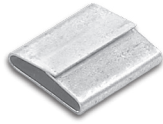
MIP

SEALS, BUCKLES, EDGE PROTECTION

For use with Steel & Plastic strap



**Snap-On Open
Regular Duty**
For Steel Strap



**Push-On
Regular Duty**
For Steel Strap



**Snap-On Serrated
Regular Duty**
For Polyester Strap



**M Series Snap-On
Extra Heavy Duty**
For Polyester Strap



**Snap-On Semi-Open
Regular Duty**
For Polyester Strap



**Wire Buckles
Light & Heavy Duty**
For Polyester Strap

For Use With Steel Strapping

Model (Part Number)	Size	Description	Thickness	Length	Weight / 1000 (lbs.)	Quantity Per Case	Cases Per Pallet
S12SO2	1/2"	Snap On Open	.020"	1.000"	5.5	2500	80
S58SO2	5/8"				7		80
S34SO2	3/4"				8		64
S34SO3	3/4"	HD Snap-On Semi-Open	.031"	1.750"	29	1000	48
S114SO3	1-1/4"			2.250"	54		12
S12PO2	1/2"	Push On	.025"	1.000"	9	2500	72
S58PO2	5/8"				11		48
S34PO2	3/4"				14.5		
S34PO3	3/4"	HD Push-On	.032"	2.000"	42	1000	64
S114PO3	1-1/4"		.035"	2.250"	79		18

For Use With Plastic Strapping

Model (Part Number)	Size	Description	Thickness	Length	Weight / 1000 (lbs.)	Quantity Per Case	Cases Per Pallet
P12SO2	1/2"	Snap-On Semi-Open	.022"	1.250"	12	1000	100
P58SO2	5/8"		.022"		14		
P12SO3	1/2"	Snap-On Semi-Open Serrated	.031"	1.900"	13		
P58SO3	5/8"		.040"	1.200"	20		
P34SO3	3/4"		.040"	1.200"	15		
P58SO4	5/8"	HD Snap-On M Series only for MIP-450	.045"	2.000"	40		18
P34SO4	3/4"		.052"		61		
P12WB2A	1/2"	Wire Buckle	.105"	NA	13	100	
P12WB3	1/2"	HD Wire Buckle	.120"		18		

Model (Part Number)	Size	Description	Color	Length	Weight / 1000 (lbs.)	Quantity Per Case	Cases Per Pallet
PCP-114	1-1/4"	Plastic Edge Protector	Black	1.625" x 2.500"	17.00	1000	40

MIP is committed to improve the ways we service our customers.
Let us know how we're doing.



www.miptools.com