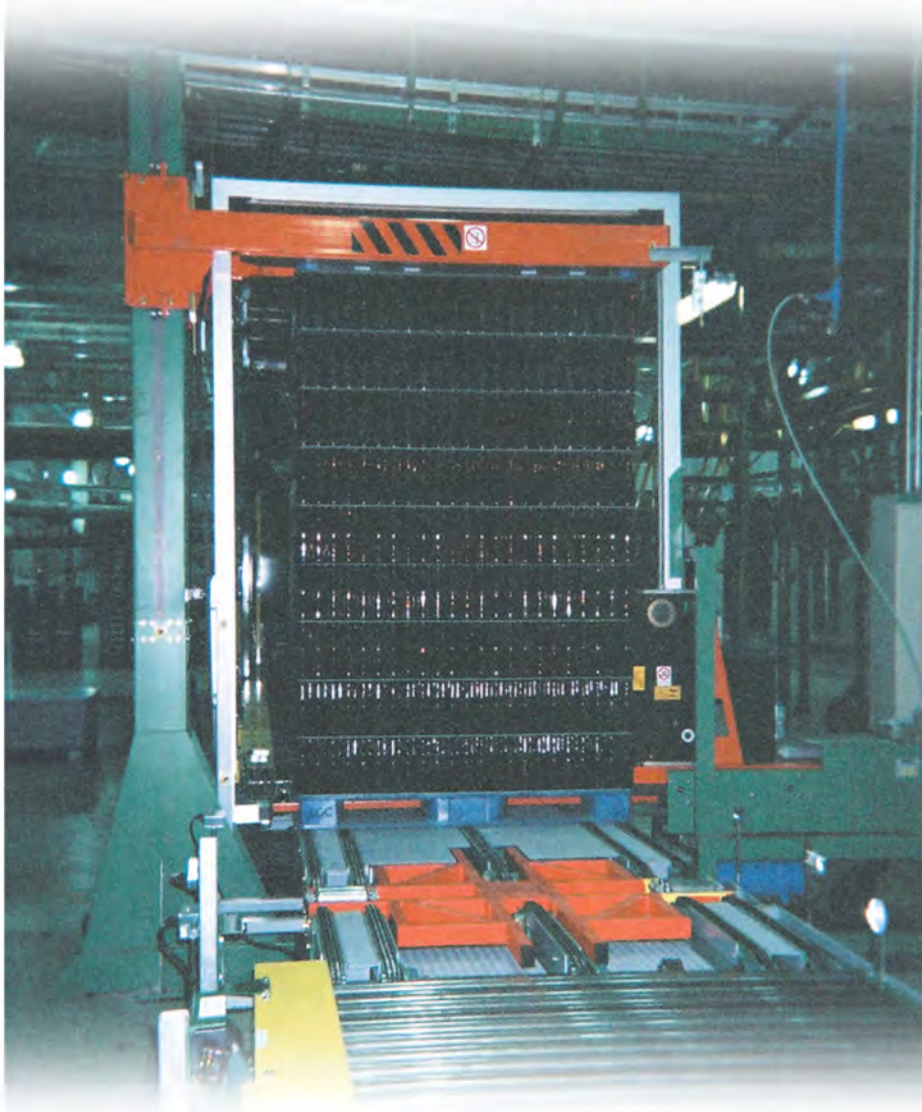


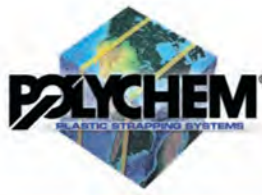
PCBU

**POLYCHEM**<sup>®</sup>  
PLASTIC STRAPPING SYSTEMS

## PLASTIC STRAPPING SYSTEMS



*CAN & BOTTLE SYSTEMS*



**POLYCHEM**  
*The Total System*  
**LOWEST COST OF OWNERSHIP**

STRAPPING

SYSTEMS

PARTS

SERVICE

TRAINING

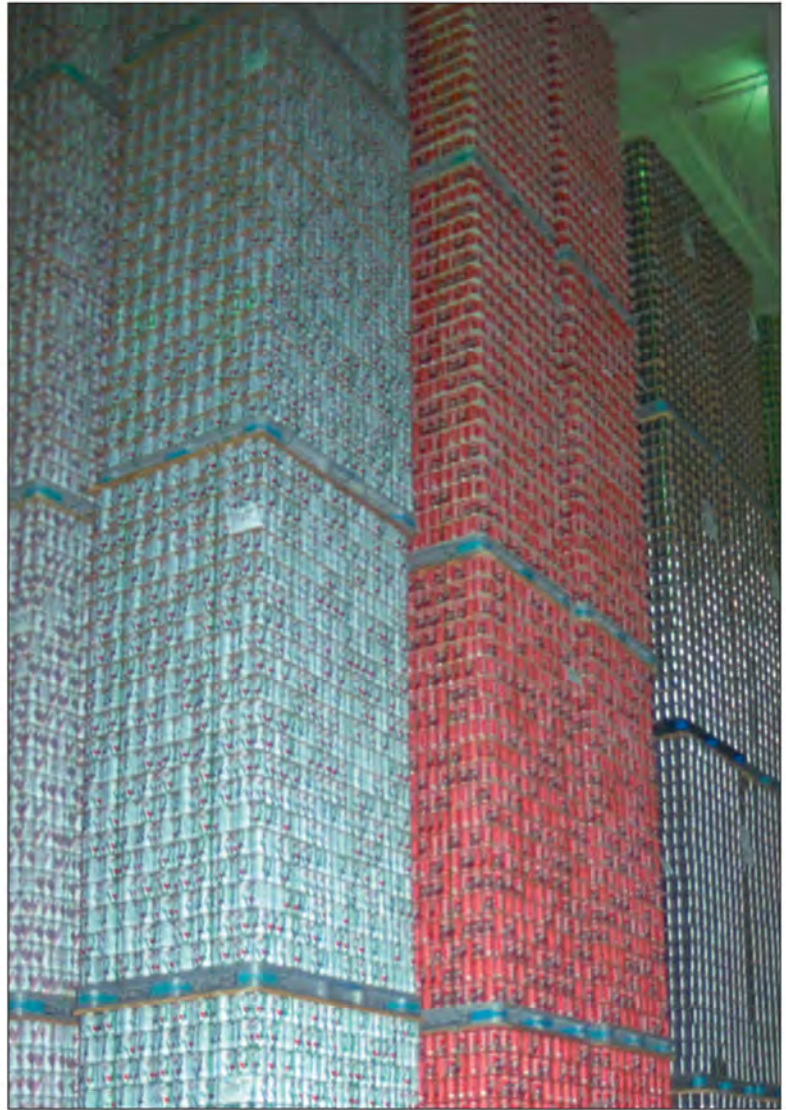
MAINTENANCE

TOOLS

RECYCLING PROGRAM

EVERGREEN

*DEDICATED  
Customer Service*



## The number one concern is Retained Tension

- Polychem's MPC 382E, the ultimate strapping for the can & bottle industry.
- With Polychem's MPC 382E one can pull the same tension and achieve greater retained tension up to 20%.\*
- MPC 382E in extra long length coils; 3/8" x .015 x 14,500'
- Contact Polychem for peak performance and your lowest cost of ownership.



*A tensometer is used to check the strap tension on can and bottle loads*

**1-888-POLYCHEM or 1-888-765-9243**

\* results will vary with application



## PCBU STANDARD

### Electronic Compression System

Electronic compression is the most reliable and efficient way to go and produces more consistent platen pressure than pneumatic systems.

### Electronically Driven Platen

Compression PET bottles/metals cans: 2000 lbs  
Compression glass bulk loads: 4000 lbs

### Tough, Reliable OMS TR-14HD Strapping Head

There are over 10,000 OMS strapping heads in operation worldwide. The TR-14HD produces a superior strength heat seal with a heavy duty heater blade that is automatically monitored and cleaned by a thermocouple. You can expect up to 3x less maintenance with the TR-14HD strapping head.



TR14HD Strapping Head



Electrical Box with Numbered Wires  
This set-up also allows for wiring in options at a later date

### Pallet Void Feeder

The roller driven pallet void feeder automatically feeds the plastic strapping through the pallet voids.



## SIDE SEAL UNIT



## PCBU OPTIONS



Touch Screen Control Panel



Test Stand with Spare Head



**Strong, Sturdy, Steel Frame**

The structure of this machine is designed for well over double the rated compression of the machine.

**Stainless Steel Track System**

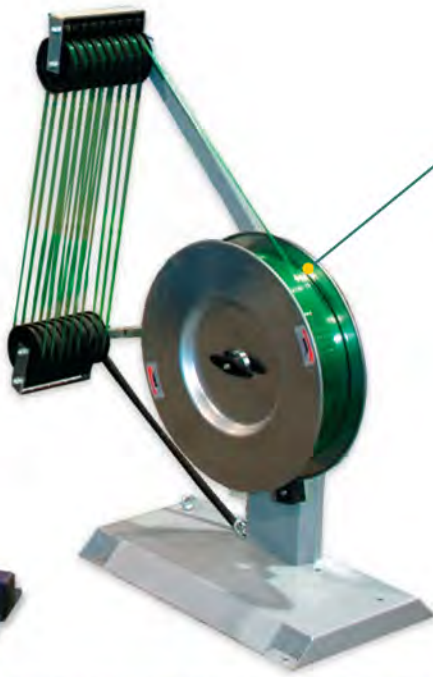
The heavy duty track system provides reliable strap feeds to minimize downtime due to misfeeds. The tightly designed system greatly reduces the possibility of the strap escaping.



*Top Seal is also available for product stability and higher throughput*

**Heavy-Duty Steel Dispensers**

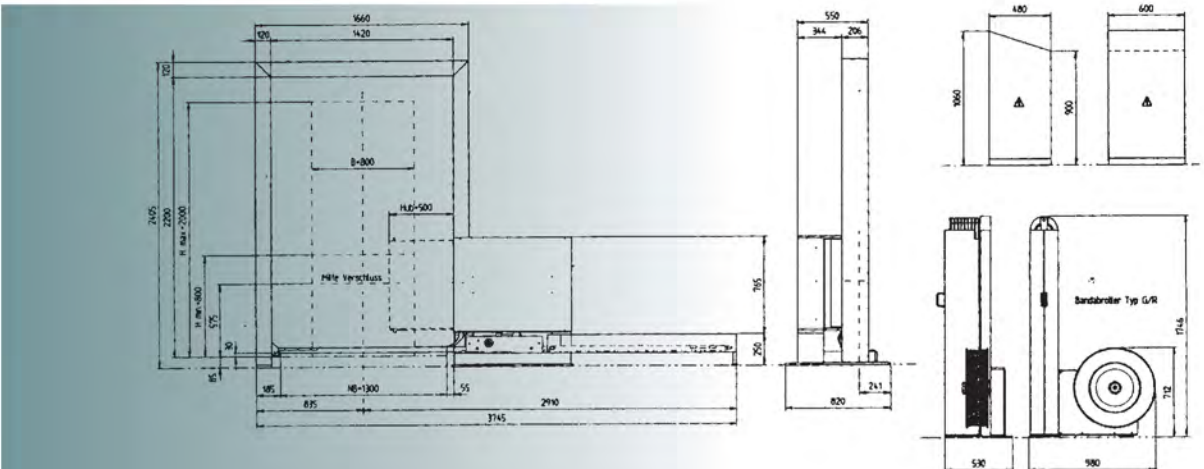
The dispensers are easy to load. The all-mechanical design simplifies the mechanism and reduces parts.



**SAFETY FEATURES**

The self-engaging brake requires power to allow the platen to move. During a loss of power, the brake automatically engages.

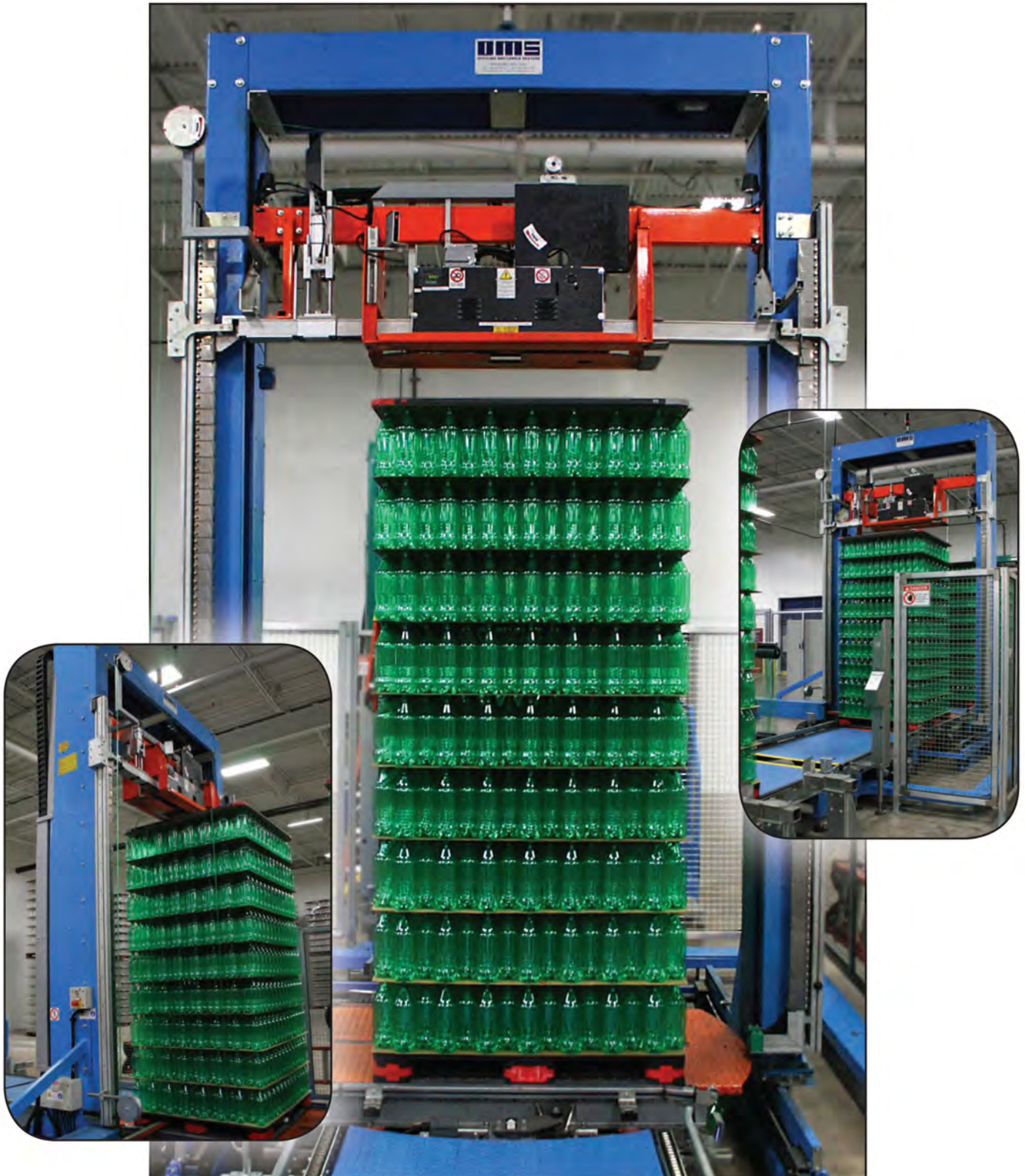
**PCBU DIMENSIONS**





**PTTS**

## **Polychem Traversing Top Seal** **with Rotating Turntable**





# Evergreen Plastics' PET Bottle Recycling Plant – Clyde, Ohio



*Polychem's Evergreen Plastics Facility in Clyde, Ohio is the nation's third largest pet recycler.*

## POLYCHEM RECYCLING PARTNERSHIP SAVES MONEY



**Polychem  
Buys**



*Chopped Strap*

**CALL NOW  
1.800.548.9557  
Ask for:  
Recycling  
Manager**



*Preforms*

## Evergreen RPET Products



*Clear Pet Bottle Flake*



*Green Flake*



*Clear Pellet*



*Green Pellet*



*LNO Pellet*

**To purchase EVERGREEN PRODUCTS, Call 419.547.1400 • Ask for Sales**

**Warranty** – Seller warrants that the products sold hereunder will conform to Seller’s specifications and will be free of defects in workmanship and materials for a period of one (1) year from the date of production. EXCEPT AS EXPRESSLY STATED HEREIN, SELLER MAKES NO REPRESENTATIONS OR WARRANTIES, EITHER EXPRESS OR IMPLIED AND EXPRESSLY DISCLAIMS ALL WARRANTIES REGARDING THE MERCHANTABILITY OR FITNESS FOR A PARTICULAR PURPOSE OF THE PRODUCTS DESCRIBED HEREIN. The equipment and procedures utilized to apply the product and environmental conditions are among the factors which may adversely affect the performance of the product. It is essential that the user evaluate whether the product is fit for a particular purpose and user’s method of application.



6277 HEISLEY ROAD  
MENTOR, OHIO 44060  
(440) 357-1500  
FAX (440) 352-9553

WEST COAST DISTRIBUTION CENTER  
11920 ALTAMAR PLACE  
SANTA FE SPRINGS, CA 90670  
(562) 903-4576  
FAX (562) 903-4579  
1-800-899-0822

EVERGREEN PLASTICS FACILITY  
202 WATERTOWER DRIVE  
CLYDE, OH 43410  
(419) 547-1400  
FAX (419) 547-4551

**CALL TOLL FREE: 1-888-POLYCHEM**  
**www.polychem.com**

or 1-888-765-9243



**OMS AMERICA INC.**

6277 HEISLEY ROAD  
MENTOR, OHIO 44060  
(440) 357-1500  
FAX (440) 352-9553