

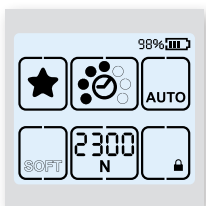
# BXT3-13 / BXT3-16 / BXT3-19

## TECHNICAL DATA SHEET

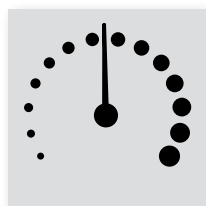
Hand Tool for Plastic Strapping



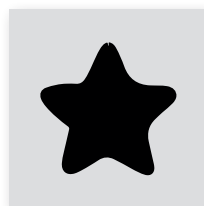
### FEATURES



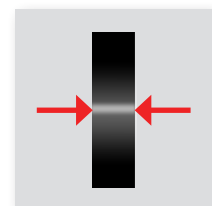
■ **Full touch user interface**  
for easiest adjustment of parameters and tool status information for operator



■ **Variable tension speed**  
controlled by finger pressure for sensitive packages



■ **Favorite strapping function**  
for quick one touch switch of tool settings for varying packages



■ **Strap alignment indication**  
to ensure that strap is inserted correctly for higher process security

**TECHNICAL DATA**

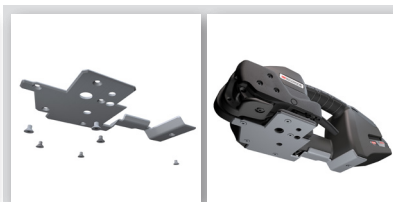


<b>Strapping tool</b>		BXT3-13	BXT3-16	BXT3-19
Operation mode		auto / semi / manual	auto / semi / manual	auto / semi / manual
Tension force range	Standard	90–270 lbs	200–560 lbs	290–1000 lbs
	Soft	22–165 lbs	90–305 lbs	90–340 lbs
Variable tension speed range		0 – 290 mm/s	0 – 220 mm/s	0 – 120 mm/s
Weight (incl. battery)		3.6 kg	3.8 kg	4.3 kg
Dimension (L x W x H)		14.5" x 5.5" x 5.3"	14.5" x 5.5" x 5.3"	14.5" x 5.5" x 5.3"
Working temperature		14–104 °F	14–104 °F	14–104 °F
Relative humidity		up to 90%	up to 90%	up to 90%
<b>Battery / charger</b>				
Charger type		Bosch	Bosch	Bosch
Battery charger voltage		100 or 110 or 230 V	100 or 110 or 230 V	100 or 110 or 230 V
Charging time		15–30 min	15–30 min	25–35 min
Battery type		Bosch Li-Ion 18V, 2.0Ah	Bosch Li-Ion 18V, 2.0Ah	Bosch Li-Ion 18V, 4.0 Ah
Cycles per battery charge				
· Low tension		800	800	800
· Medium tension		600	400	500
· High tension		400	200	300
<b>Strap</b>				
Strap		PET (Polyester) PP (Polypropylene)	PET (Polyester) PP (Polypropylene)	PET (Polyester) PP (Polypropylene)
Width		3/8", 1/2"	1/2", 5/8"	5/8", 3/4"
Thickness		PET .015"–.031" PP .019"–.031"	.019"–.040"	.031"–.051"
<b>Features</b>				
Real time indication of applied tension force		●	●	●
Variable tension speed		●	●	●
Favorite strapping function		●	●	●
Display color indication for tool status information		●	●	●
Strap alignment indication		●	●	●
Strap dust blow out vent		●	●	●
Battery protection		●	●	●
0–Tension welding		●	●	●

**ACCESSORIES**



■ **User interface cover**  
for additional protection in harshest environment



■ **Protection plate**  
for usage on abrasive surfaces



■ **Suspension bow**  
for stationary applications



04.2017 Subject to modification