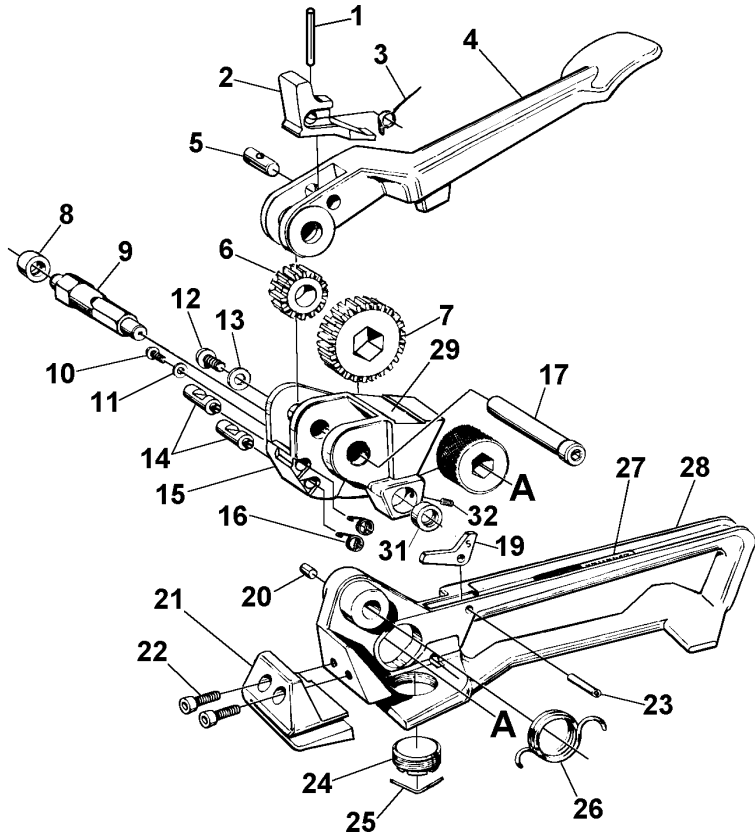


PARTS LIST, PFH (017930)

| KEY | QTY. | PART# | DESCRIPTION |
|------------|-------------|---------------|--------------------------|
| 1 | 1 | 014809 | Roll pin, .093 x 1.000 |
| 2 | 1 | <u>017959</u> | <u>Drive pawl</u> |
| 3 | 1 | <u>017946</u> | <u>Drive pawl spring</u> |
| 4 | 1 | 017932 | Tension handle |
| 5 | 1 | 017945 | Pawl pin |
| 6 | 1 | 017925 | Pinion gear |
| 7 | 1 | 017926 | Tension gear |
| 8 | 1 | <u>017929</u> | <u>Bushing</u> |
| 9 | 1 | 017947 | Feedwheel shaft |
| 10 | 1 | 041912 | BHCS, #10-24 x 3/8 |
| 11 | 1 | 184501 | Washer, 3/16 SAE |
| 12 | 1 | 043982 | BHSCS, 5/16-24 x 1/2 |
| 13 | 1 | 004959 | Washer, 5/16 SAE |
| 14 | 2 | <u>017943</u> | <u>Hold pawl</u> |
| 15 | 1 | 017928 | Gear housing |
| 16 | 2 | <u>017944</u> | <u>Hold pawl spring</u> |
| 17 | 1 | 017937 | Pivot pin |
| 18 | 1 | <u>020517</u> | <u>Feedwheel</u> |
| 19 | 1 | 017941 | Lift arm |
| 20 | 1 | <u>001656</u> | <u>Strap guide pin</u> |
| 21 | 1 | <u>017935</u> | <u>Breaker nose</u> |
| 22 | 2 | 007878 | SHCS, 1/4-28 x 3/4 |
| 23 | 1 | 097526 | Roll pin, 1/4 x 7/8 |
| 24 | 1 | <u>017939</u> | <u>Wear plug</u> |
| 25 | 1 | <u>017952</u> | <u>Lock wire</u> |
| 26 | 1 | <u>017942</u> | <u>Base spring</u> |
| 27 | 1 | 003133 | Warning sign |
| 28 | 1 | 017934 | Base |
| 29 | 1 | 017955 | Nameplate |
| 31 | 1 | 424035 | Bushing |
| 32 | 1 | 020694 | Set screw |



▲WARNING
 Inspect all parts daily and replace them if they are worn or broken. Failure to do this can affect a product's operation and could result in serious personal injury.

NOTES:

1. When ordering parts, please show tool model, part number and name. All recommended spare parts are underlined and should be stocked. Standard hardware parts may be obtained from local hardware suppliers.
2. Slot in roll pin (23) must face down.
3. Assemble lift arm (19) with leg marked "S" as shown.

MAINTENANCE

Clean and apply a light weight machine oil to all moving parts on a weekly basis. Clean the feedwheel daily with a wire brush. Debris accumulated in the teeth of either the feedwheel or the clutch plug must be removed with a small wire brush. A need to clean the teeth will become apparent when either the feedwheel skids on the strap or the lower straps slips on the clutch plug during tensioning.